

MOUNTED PRODUCTS CATALOGUE 2023



Prices are subject to change and are recommended retail prices without VAT.
When ordering, please seek a formal quotation from Kersten UK or an authorised Kersten Dealer.

1

Contact Us



Director

Chris Faulkner
Tel: 0118 986 9253
Mail: office@kerstenuk.com

Sales and Marketing Manager

Sean Faulkner
Tel: 0118 986 9253
Mail: office@kerstenuk.com

Parts and Servicing Manager

Douglas Faulkner
Tel: 0118 986 9253
Mail: parts@kerstenuk.com

Accounts Enquiries

Tel: 0118 986 9253
Mail: accounts@kerstenuk.com

Find Us On

Our Website

<https://kerstenuk.com>

Facebook

<https://www.facebook.com/kerstenuk>

Instagram

<https://www.instagram.com/kerstenuk>

LinkedIn

<https://uk.linkedin.com/company/kersten-uk-ltd>

Twitter

<https://www.twitter.com/kerstenuk>

Please Note

All information on equipment and technical data is non-binding. We reserve the right to make changes regarding further development. All prices quoted are recommended retail prices without VAT. Subject to misprints. Our general terms and conditions apply to all deliveries. These can be viewed in the product catalogue or on our website: www.kerstenuk.com/terms-conditions

Prices are subject to change. When ordering, please seek a formal quotation from Kersten UK or an authorised Kersten Dealer.

Our Dealers

Our machines are sold in the UK by our network of dedicated Dealers. Visit the contact us page on our website to find your nearest Dealer.



Contents	Page	Contents	Page
Contact Us	1	Polaro L/XL-Series Spreader	69-70
Contents	2	Basic-Series Snow Blower	71-72
About KerstenUK	3-4	Intermediate-Series Snow Blower	73-74
Front Linkages	5-6	Profy-Series Snow Blower	75-76
FK-FKDR-Series Linkage	7-8	WE 110-Series Gravel Path Renovator	77-78
FK-FKDR-Series Sweeper	9-10	WE150-Series Gravel Path Renovator	79-80
FK-FKDR-Series Weedbrush	11-12	Grader HK PH 100-150 Mini	81-82
FK-FKDR-Series Snow Plough	13-14	LBV 6900-Series Blower	83-84
FKDR-SLDST-Series Spreader	15-16	MOW-HM 140-Series Rotary Mower	85-86
FK-FKDR-Series Blower	17-18	MOW-HM 160-Series Rotary Mower	87-88
FK-FKDR-Series Weed Burner	19-20	MOW-HM 190-Series Rotary Mower	89-90
MP-HYDR-DP-HECK PTO Drive Hydraulic Pack	21-22	SCA-M 130-Series Grass Harrow	91-92
FKM 37-Series Sweeper	23-24	MRM-H 120-Series Vacuum Nozzle	93-94
HKM 40-Series Sweeper	25-26	CLS-G/H 650/850-Series Collector	95-96
KM 45-Series Sweeper	27-28	CLS-G/H 1050/1350/1650-Series Collector	97-98
KM 50-Series Sweeper	29-30		
KM 52-Series Sweeper	31-32		
KM 60-Series Sweeper	33-34		
FKM 60L-Series Sweeper	35-36		
FKM 60-Series Sweeper	37-38		
KM 70-Series Sweeper	39-40		
UB6080 H-Series Weedbrush	41-42		
UB6080 MK-Series Weedbrush	43-44		
UB6080 MH-Series Weedbrush	45-46		
UB Easy-Series Weedbrush	47-48		
UB Easy VB-Series Weedbrush	49-50		
ThermHit-Series Weed Burner	51-52		
WeedAir-Series Weed Burner	53-54		
WeedAir 1002 IB Weed Burner	55-56		
FK-PAK-Series Snow Plough	57-58		
FK-ABR-Series Snow Plough	59-60		
FB-UTV-Series Snow Plough	61-62		
FB-4x4-Series Snow Plough	63-64		
Polaro-Series Spreader	65-66		
Polaro E-Series Spreader	67-68		



Site Maintenance Requires Experience

Kersten is one of the leading manufacturers of site maintenance equipment in Europe. The range includes attachments for a host of vehicles, from ride on mowers and compact tractors to agricultural tractors, Unimog and single-axle vehicles.

Kersten UK specialises in attachments for compact and sub compact tractors. We bring the expertise and innovations of some of the best equipment brands in Europe to our customers in the UK. It is important to us that everything fits correctly and your experience with the machine is as great as you would expect, so we also provide the linkage and power systems to make sure it all works together. The equipment is sold through our trusted dealer network to ensure you get the best local support for your investment, each of our dealers has fantastic knowledge of our solutions and dedicated sales and workshop team members to ensure you get the best from your machinery.

What Kersten Does

Our Mission

To give every ground care professional the tools to make a better world.

Our Aspirations

We can make our world a cleaner and safer place one ground care professional at a time, by arming them with the tools to make the best job of maintaining their grounds. We take pride in working to become the easiest company to deal with; continually improving our people, our products and our delivery.

Our Products

We strive to deliver the best products for our customers in the areas of weed control, outdoor cleaning, snow and ice management and grass cutting. Our products are sourced from the best industry suppliers and then perfected for the unique demands of our territories.

Our Background

We started importing the Kersten range of sweepers and grounds maintenance equipment from Germany in 2004. The family business is run by Chris Faulkner and involves his two sons, Sean and Douglas, as well as a team of incredible staff. We have the main office in Reading and a satellite office in Scotland. We sell through a network of dedicated Authorised Dealers, to supply the best possible service for our customers.

Warranty

Register your machines for our two year warranty. Available on all the brands we sell.



Kersten manufactures a wide range of site maintenance equipment for weed control, snow clearance, sweeping and mowing. Kersten two wheel tractor attachments are renowned for their high quality and innovative design.



Cerruti are Snow Blower Specialists. We are proud to represent their fantastic range of Snow blowers, which fit to a huge variety of tractors and other vehicles.



Hoaf are a manufacturer of quality infrared weed control solutions. The Thermhit and Weedair range are ideal for managing weeds in urban areas and parks, making the job easy to carry out from the comfort of your tractor.



Matev are renowned for their innovative collection systems, to work in conjunction with their mowers and vacuum systems. Matev also produces front linkages for many different models of tractor.



The Lehner range of Polaro Spreaders deliver the latest in Winter Management Maintenance technology. These impressive spreaders have extremely small power requirements, making them extremely suitable for use with Electric vehicles and vehicles under 3.5 tonnes.



Faulkner Brothers is our own brand of equipment built here in the UK. Our equipment is made with innovation at it's heart, using the latest technology to maximise productivity and ease of use.



Folger are a specialist manufacturer of front linkage and PTO systems. They have one of the largest ranges of high quality front power systems in the world, allowing your tractor to be much more productive.

Front Linkages



The rear 3 point linkage has been standard equipment on most compact tractors since the 1960's after it's patent for use on an agricultural tractor by Harry Ferguson in 1926. A rear linkage is ideal for work in the soil, as the tractor is not driving over the task it has just accomplished. However, this same advantage becomes a disadvantage for many hard surface maintenance operations such as sweeping and snow ploughing. In these cases it is important for the implement to go in front of the tractor, so that soil, snow or other material isn't compacted into the surface by the wheels of the tractor - making it harder to remove.

A front linkage also has the advantage of positioning an attachment where you can see it at all times without craning your neck. This is particularly useful in urban environments, where it is important to keep your attention in the direction of motion most of the time to avoid traffic and other obstacles which are far more plentiful than in the field.





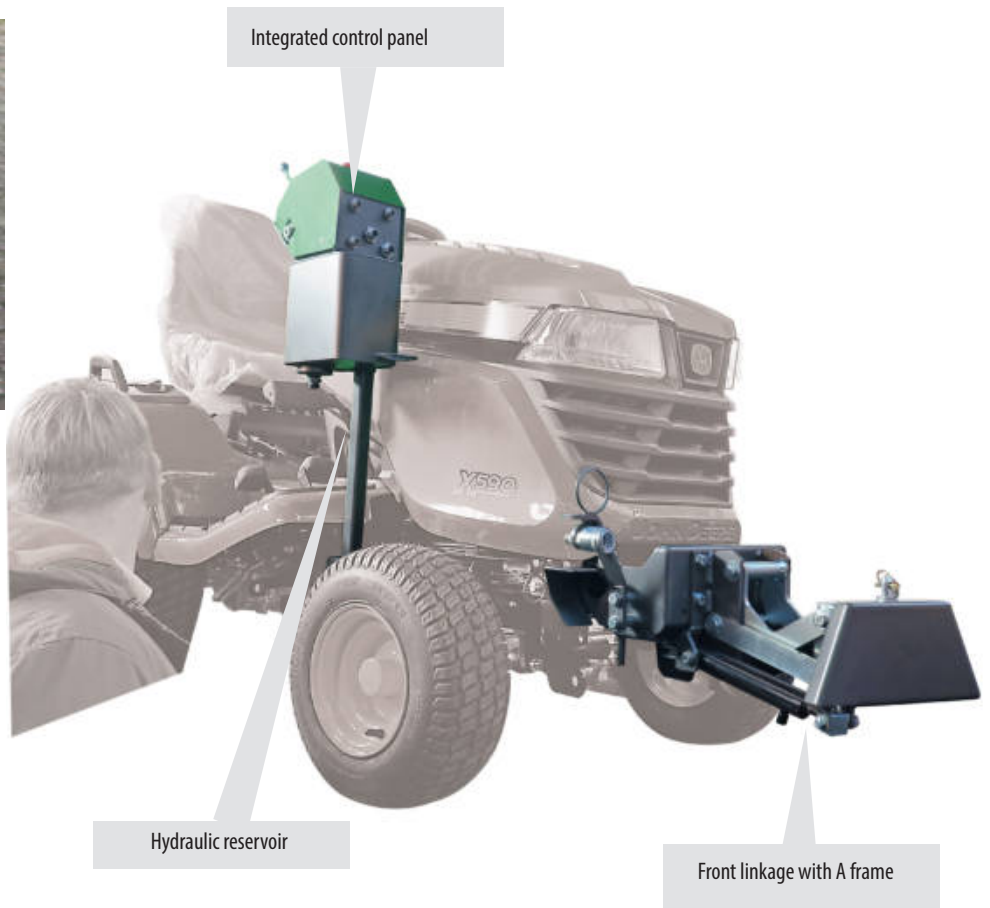
Kersten UK offers front linkages and drive systems for many popular tractor models, helping you fit our attachments to your tractor without fuss.

Our front linkages are sourced from Matev and Folger in Germany, allowing us to provide the optimum solution for your tractor and desired attachments. Front linkages want to be as compact as possible, allowing the implement to remain close to the tractor, while making best use of the lift capacity.

We have solutions for many tractor models that allow a front PTO to be fitted without the need to remove a mid mounted deck, so you can change from grass cutting to another operation really easily. A wide range of PTO speeds and directions are available to suit the most common applications.



FK-FKDR-Series Linkage



Specification

FKDR / HYDR

Front linkage kit with hydraulic operation and drive

- Hydraulic lift and lower
- Hydraulic angling left and right
- Hydraulic tank with control valves and 1/2" hydraulic couplings (1 double acting valve + 1 double acting with flouting position and motor drive with variable speed control)
- Supplied with male quick attachment "A" frame to suit Kersten FKDR sweepers, snow ploughs, WeedBrush, wide area brush, Hoaf Weed burners and spreaders.

Ride-on Mowers are a really convenient tool carrier. Most contractors and sites have at least one that is being under utilised for much of the year when the grass isn't growing.

Kersten has a range of attachments that keep your mower active all year round. They are designed with their own integrated hydraulic kit, meaning you don't need anything else to power them - just your engine. The linkage gives you lift/lower/angling and power to the attachment, all operated from the seat. The hydraulic drive minimises the reliance on belts and other wearing items, so the attachments are extremely reliable and backed up with our commercial 2 year warranty.

The FKDR-HYDR front linkage kit for ride-on mowers provides a hydraulic power supply, which can be used to power attachments on a Ride on Mower. The kit consists of a hydraulic pump driven from the ride-on mower engine. This is usually integrated in the FKDR mounting frame.

An oil reservoir, a valve set to control the oil services is mounted on the chassis of the mower within reach of the machine operator. The front linkage has a quick attach A frame which remain permanently attached to the front of the mower. The attachments mount on to the front linkage. They may be lifted, lowered and angled from the seat.

Model Number	Price (£)	Fits to:
FKDR-HYDR-KUGR1600	2795	Kubota GR1600, GR1600-II
FKDR-HYDR-KUGR2120	2795	Kubota GR2100, GR2120, GR2120S
FKDR-HYDR-JDX300	2795	John Deere X300
FKDR-HYDR-JDX500	2795	John Deere X500
FKDR-HYDR-ISSXG216	2795	Iseki SSG216



Brackets & Linkages



Power Unit



Attachments



Accessories



Consumables



SWEeper FITTED TO KUBOTA GR2100

FK-FKDR-Series Sweeper



Specification

- 37cm Diameter
- Hydraulically driven
- Including 5 row poly sweeper brush
- 2 height adjustable Wheels 135 x 40 mm
- Hydraulic quick coupling
- Suitable for mounting on the Kersten FKDR front coupling triangle only

The KM 37 series for the FKDR linkage is a versatile sweeper with big performance in our lightest weight, strong compact chassis. Optional accessories include a manual opening front collector box, gulley brushes and front brush guard. When choosing the correct sweeper for your application you should consider the width of the power unit, and horsepower available to power the sweeper and capacity to lift the sweeper, with a full collector if required. It will fit a wide variety of applications, including; John Deere X300 and X500 series, Kubota GR series and Iseki SXG 216.

Model Number	Price (£)	Description
KM 10037 H-FKDR	2795	Front mounted sweeper 100cm
KM 11537 H-FKDR	2975	Front mounted sweeper 115cm
KM 12537 H-FKDR	2995	Front mounted sweeper 125cm

Accessories:

Part Number	Description	Price (£)
GUSPL 100	Front Brush Guard 100cm	270
GUSPL 115	Front Brush Guard 115cm	285
GUSPL 125	Front Brush Guard 125cm	305
SSB 100 K	Collector Box 100cm	895
SSB 115 K	Collector Box 115cm	950
SSB 125 K	Collector Box 125cm	995
AST 37 LR	Garage Stands	230

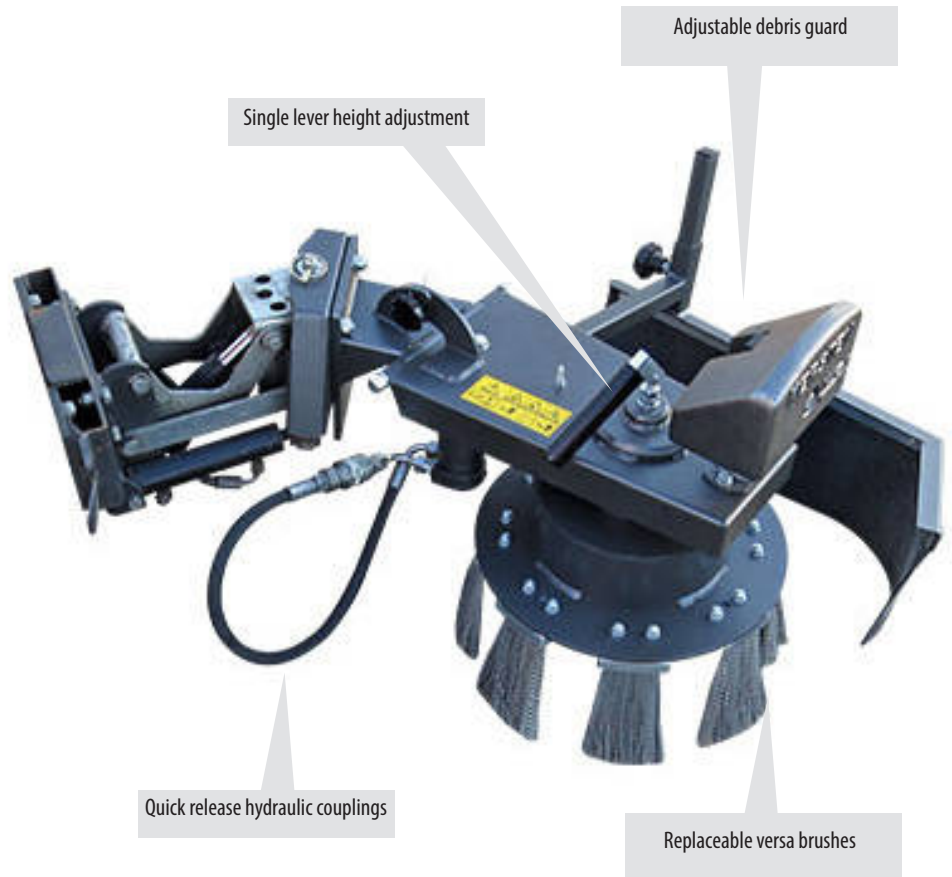
Part Number	Description	Price (£)
ASM 403237	Mechanical Gully Brush 40cm	895
ASH 403237	Hydraulic Gully Brush 40cm	1400
105 425 400	Replacement Gully Brush 40cm	110
100 510 037	Replacement Brush 100cm	450
115 510 037	Replacement Brush 115cm	465
125 510 037	Replacement Brush 125cm	475

Brackets & Linkages
 Power Unit
 Attachments
 Accessories
 Consumables



KM 10037H-FKDR FITTED TO AN ISEKI SXG216

FK-FKDR-Series Weedbrush



Specification

- Hydraulic Angling
- Hydraulically driven Brush Plate
- Manual Brush adjustment
- Spindle and Caster Height Adjustment
- Weight - 42Kg
- Height Adjustable Debris Guard
- Warranty - 2 year
- 8 Replaceable Versa Brushes

The WKB H is the smallest attachment for power units in the Weedbrush series. With a working width of 400 mm, this weedbrush is suitable for keeping larger areas such as squares, walking routes, bicycle paths and similar areas free of weeds. The FKDR/HYD linkage kit must be purchased in order to fit this weed brush. Hydraulics are supplied with the kit and are powered by the mower engine via a belt. The FKDR Kit is supplied with an integrated control panel to operate the lift/lower mechanism, angling and engage power to the implement. There are 2 levers. One lever controls the angling left and right. The other lever lifts and lowers the linkage. There is a float position on this lever, when engaged—power will be delivered to the weed brush. The FKDR range sports the same robust construction techniques as our pedestrian weed brushes, with CNC folded and welded, heavy gauge steel.

The Weight on the front of the brush allows aggressive clearing of material by increasing the contact pressure, which can be relieved with the castor wheel. Our 8 section 40cm Diameter brush removes engrained dirt, moss and weeds with ease. Using versa brushes to cut and sweep the weeds from the surface. Sweeping height is adjusted by heavy duty gauge wheel—the wheel is adjusted by a spindle for precise positioning of the brush. Suitable for fitting to a wide range of ride on mowers.

Model Number	Price (£)	Description
WKB-H-FKDR	2795	Weedbrush 40cm working width

Accessories:

Part Number	Description	Price (£)
700 000 135	Steel versa brush (8 required)	12.05
700 000 135N	Nylon versa brush (8 required)	12.05
750 000 135	Heavy duty steel versa brush (8 required)	16.95

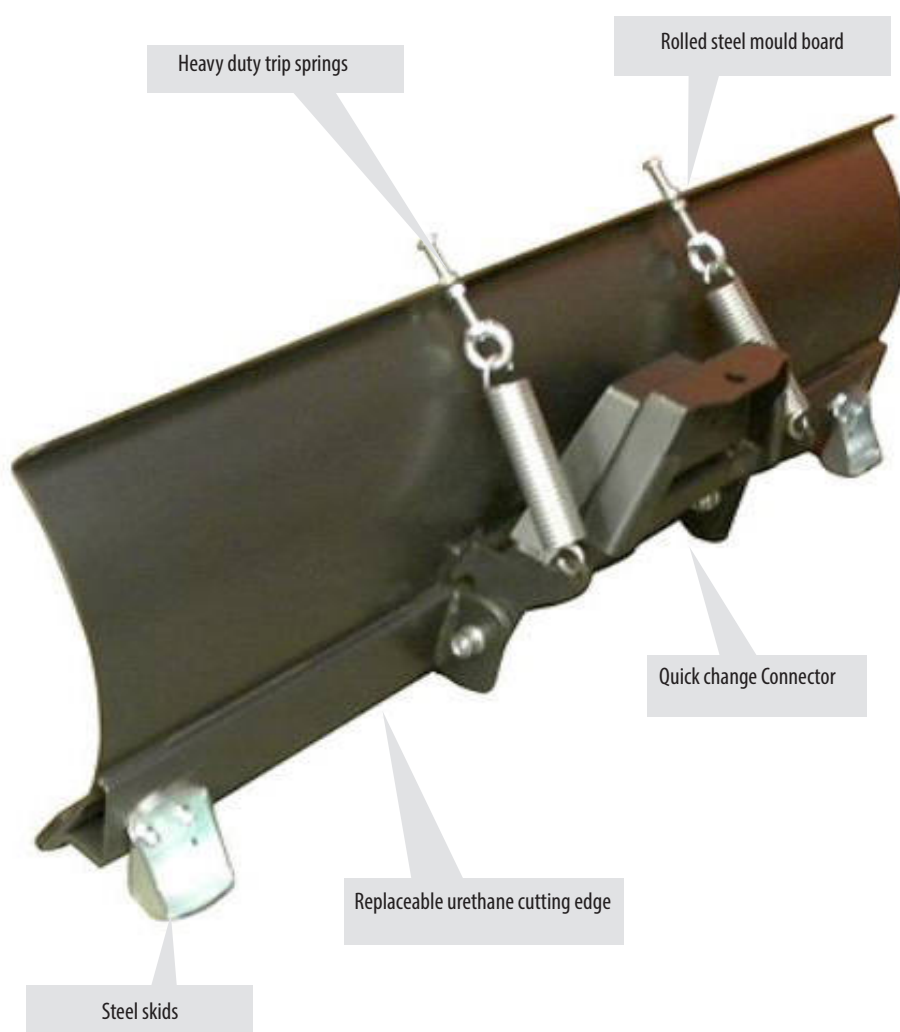
 Brackets & Linkages	 Power Unit	 Attachments	 Accessories	 Consumables
---	--	---	---	---



WKB-H-FKDR FITTED TO JOHN DEERE X590

FK-FKDR-Series

Snow Plough



Specification

- 45cm high
- spring break back protection system
- 2 retracting springs
- adjustable ground skids
- adjustable urethane cutting edge
- suitable for mounting on the FKDR front coupling triangle

This is our range of professional snow ploughs for Ride on Mowers. The SCHN FK range is light weight and easy to handle using the FKDR with hydraulic lift, lower and angling. The sprung blade protection prevents damage from contact with street furniture and other objects, ensuring the plough lasts for many seasons. The Kersten ploughs are built with a steep attack angle, to ensure effective clearance of different types of snow and the curve allows it to roll off the blade easily. When the storm comes you will be ready for action!

Model Number	Price (£)	Description
SCHN11045 FK-FKDR	950	Snow blade 110cm working width
SCHN12545 FK-FKDR	1150	Snow blade 125cm working width

 Brackets & Linkages

 Power Unit

 Attachments

 Accessories

 Consumables



SCHN PLOUGH FITTED TO A KUBOTA GR2120

FKDR-SLDST-Series Spreader



Hopper screen



Spreading width adjustment



Stainless steel spinner



70 litre hopper

Material dosage adjustment

Bracket for ride on mowers

Specification

- 70 Litre capacity
- For Spreading Salt or Sand and other free flowing material
- Hydraulic drive from the FKDR Linkage
- Manual spread volume control
- Spreading width of 0.5-4 metres
- Damp Material Agitator
- Stainless Steel Hopper
- AK-SLDST-H Bracket required to suit mower

The SLDST 70 Powered Gritter/Spreader is a professional spreader that can deal with different material types. The hydraulic drive makes it easier to operate and minimises maintenance.

Operating the machine is as simple as one lever, the operator controls the operation from the FKDR control console. The ability to use it with your ride on mower makes it perfect for small- to medium-sized jobs like icy walkways and long, snowy driveways.

The damp material agitator allows it to spread a more diverse range of materials more easily than other systems, getting the job done faster and with less manual intervention - giving you more time on the job and less time fixing problems.

Model Number	Price (£)	Description
SLDST 70 H-FKDR	3095	70 litre hydraulic spreader

Accessories:

Part Number	Description	Price (£)
AK-SLDST-H	Extension console rear attachment for ride on mower (required)	395
ADP-SLDST	Hopper cover for spreader	240

 Brackets & Linkages

 Power Unit

 Attachments

 Accessories

 Consumables



KERSTEN SLDST SPREADER FITTED TO A KUBOTA GR SERIES MOWER

FK-FKDR-Series Blower



Specification

- Hydraulic Angling
- Engine Driven Leaf Blower
- 13HP Honda GX Petrol Engine
- Manual Blower adjustment
- 5 Height Adjustment settings
- Automatic oil Shut-off
- Aluminium Impeller
- PE Plastic Fan Housing
- 2 swiveling ball-bearing Wheels 180x85 mm
- Air Reach - 8m
- Parking supports for storage

The LBV H0 allows our quiet leaf blower series to be fitted to ride-on mowers.

The LBV has a light weight, dynamically balanced aluminium fan producing an air velocity of 230 km/h allowing even wet heavy material to be lifted from the surface and blown up to 8 meters. Very low noise is achieved with the use of inlet and outlet silencers and a one piece plastic fan housing. The resulting sound-pressure at the ear of the operator is $\leq 84\text{dB}$ allowing the use of the LBV without the need of ear protection, allowing use in more built up areas. Easy adjustment of the air direction is possible allowing fast results even in places with restricted manoeuvrability.

Large castors allow the machine to follow contours with ease and cushion the impact on all parts of the blower and tractor extending its life. The 13hp Honda GX Petrol engine allows you to run the blower on your ride on mower without the need for any hydraulics or PTO.

Model Number	Price (£)	Description
LBV-H0-FKDR	3650	Powered leaf blower

Brackets & Linkages

Power Unit

Attachments

Accessories

Consumables



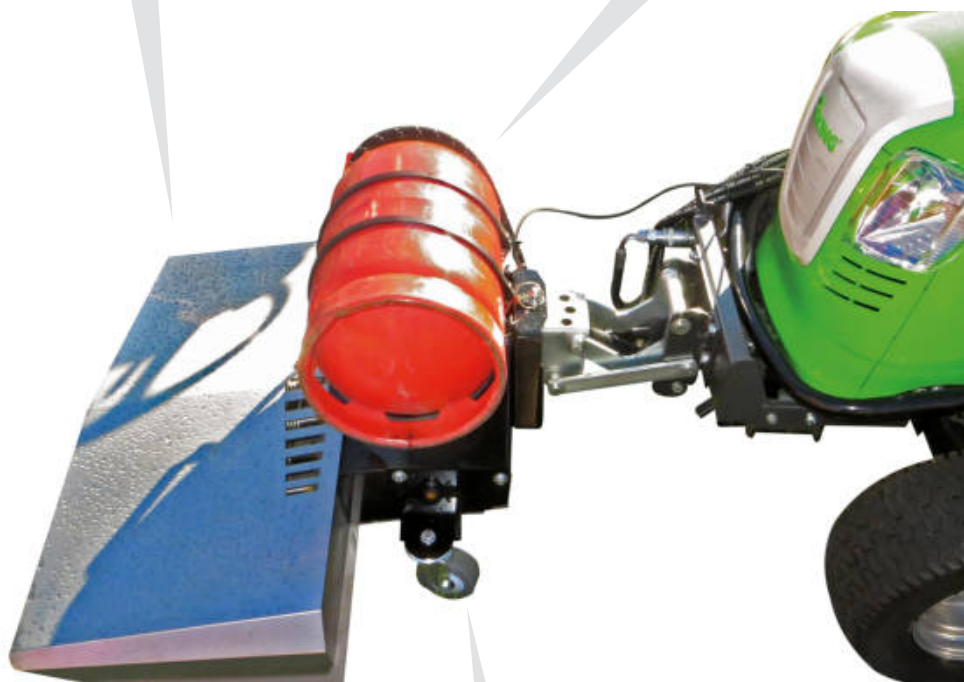
FKDR BLOWER FITTED TO A KUBOTA GR SERIES

FK-FKDR-Series Weed Burner



Stainless steel heat reflecting hood

Gas carrying trolley



Integrated burners

Heavy duty caster wheels

Specification

- Gas - Liquid Propane - (gas off-take)
- Capacity - 82kw Gas Consumption - 6.0kg/hour
- Ignition Device - Piezo
- Working width - 750mm
- Weight - 40Kg
- Capacity per hour - 2250m² @ 3kmh
- Warranty - 1 year
- Complete with:
- Adjustable gas pressure regulator.
- Burner protection shield.

The HOAF thermHIT[®] 75 is the smallest attachment for power units in the HOAF thermHIT[®] series. With a working width of 750 mm, this burner is very suitable for keeping larger areas such as squares, walking routes and bicycle paths free of weeds. Despite the large working width, the HOAF thermHIT[®] 75 continues to move easily thanks to the robust wheels. The burner is ignited electrically by means of a battery igniter.

The Hoaf thermHIT is ideal for burning weed on paths, paving and around obstacles. The gas consumption of the thermHIT 75 is around 6kg per hour. This can treat up to 2250m² at a slow walking pace.

The HOAF Mounted burners are balanced very well, which results in simple operation. The gas consumption can be adjusted using the gas control valve which results in gas efficient operation. Thanks to the low burner cover it is possible to easily burn under benches. The ThermHIT 75 uses Liquid Propane Gas bottles with liquid off-take available from Calor Gas in 12kgs. The bottle trolley is built into the machine, which makes light work of transporting the gas supply.

Model Number	Price (£)	Description
TWB75-FKDR	8950	Mounted weed burner 75cm

Part Number	Description	Price (£)
ABR-TWB-FKDR	Bracket for FKDR linkage	895

Brackets & Linkages

Power Unit

Attachments

Accessories

Consumables



HOAF WEEDBURNER FITTED TO FKDR LINKAGE

MP-HYDR-DP-HECK PTO Drive Hydraulic Pack



Specification

- Hydraulic kit for tractors with PTO drive
- for attachment to the rear three-point linkage CAT I and CAT I N
- 50 liter hydraulic tank
- Hydraulic pump with pressure relief valve
- Litre output: 30 l/min
- Including cardan shaft 1 3/8" 6-piece, PTO 540 rpm
- Direction of rotation in the direction of travel to the right
- Hydraulic connector (ISO 7241-1-A-BG3)

This rear mounted, PTO driven device adds a powerful hydraulic system to your tractor, enabling you to run hydraulic front attachments that require more oil, oil flow and pressure than is typically found on sub compact and compact tractors.

Perfect examples where this is useful, would be running a sweeper or weedbrush on a Kubota BX series or John Deere 2 or 3 series tractor. The PTO turns a pump on the device, allowing it to provide hydraulic flow of up to 30l/minute. The 50 litre tank of oil ensures that there is enough oil for it to stay cool whilst running more demanding attachments, protecting the longevity of your tractor.

Extensions are available, to run the hydraulics to the front of the tractor, allowing easy connection with quick release couplings to all Kersten Hydraulic attachments (as well as many others).

Model Number	Price (£)	Description	Part Number	Description	Price (£)
MP-HYDR-DP-HECK	2595	50 litre hydraulic tank and pump for powering front attachments	ABR-HY-DR-X900	Connection to rear 3PL on John Deere X900	1150

Part Number	Description	Price (£)
SL-HYDR-DP-HECK	Hydraulic extension kit to route hydraulics to front attachments	250

Brackets & Linkages
 Power Unit
 Attachments
 Accessories
 Consumables



HYDRAULIC SYSTEM FOR POWERING ATTACHMENTS

FKM 37-Series Sweeper



Model Number	Price (£)	Description
FKM 12537 H	2895	Front mounted sweeper 125cm - Hydraulic Drive
FKM 12537 M	3395	Front mounted sweeper 125cm - Mechanical Drive

Specification

- 37cm Diameter
- Hydraulically or mechanically driven
- Including 5 row poly sweeper brush
- 2 height adjustable Wheels 135 x 40 mm
- Suitable for mounting on the Kersten Cat 0 front coupling triangle only

Sweeping is a relatively quick operation, that can be carried out no matter the season. Regular sweeping of organic debris and soil greatly reduces the level of weeds, enhances the appearance and reduces drainage problems on a variety of different surfaces such as block paving and tarmac. Sweeping can also be used for moving snow, mud, leaves and many other kinds of material, making a sweeper one of the most versatile attachments for your tractor.

The FKM 37 series is a versatile sweeper with big performance in our lightest weight, strong compact chassis. Optional accessories include a manual opening front collector box, gully brushes and front brush guard. When choosing the correct sweeper for your application you should consider the width of the power unit, oil flow or PTO horsepower available to power the sweeper and capacity to lift the sweeper, with a full collector if required.

It will fit a wide variety of applications, including; John Deere Quick-Tach for X-series and 1026, Kubota B1220 , Kubota G23 - G26 with Kersten front linkage, Cat 1 linkage A-frames and some smaller outfront mowers such as the Kubota F1900.

Accessories:

Part Number	Description	Price (£)
ABR 37 KD	Bracket for Cat 0 linkage	550
ABR 37 FM	Bracket for out front mowers	550
ABR 37 US	Bracket for John Deere Quick-Hitch linkage	550
GUSPL 125	Front Brush Guard 125cm	305
SSB 125K	Collector Box 125cm	995
AST 37 LR	Garage Stands	230

Part Number	Description	Price (£)
ASM 403237	Mechanical Gully Brush 40cm	895
ASH 403237	Hydraulic Gully Brush 40cm	1400
105 425 400	Replacement Gully Brush 40cm	110
125 510 037	Replacement Brush 125cm	475

Brackets & Linkages
 Power Unit
 Attachments
 Accessories
 Consumables



FKM 12537 M SWEEPER FITTED TO A HUSQVARNA MOWER

HKM 40-Series Sweeper



Specification

- Rear Mounted
- Mechanical Drive - Includes PTO shaft
- Includes garage stand
- Folded steel frame construction
- Brush diameter 40cm
- 2 support wheels 200x40cm with individual lever height adjustment
- Mechanical angling left and right
- Supplied with 2 section, 5 row Combi brush
- Supplied with (Cat 1) 3-point linkage mounting frame

The HKM series is a professional rear mounted sweeper for compact tractors. The light weight steel construction of the sweeper chassis is incredibly strong thanks to the unique design and use of advanced manufacturing techniques found in the Kersten factory. Today's product is a result of many years of practical experience fitting sweepers to many power units. Two widths of sweeper 125cm-150cm are available to accommodate the working width and weight capacity of the tractor it is fitted to.

The sweepers utilise the CAT 1 three point linkage and a suitable rear 540rpm PTO drive. They feature our 5 row spiral brush and can be fitted with many useful accessories such as collector box and gully brush to help keep hard surfaces clean.

Model Number	Price (£)	Description
HKM 12540 M	4395	Rear mounted sweeper 125cm - Mechanical Drive
HKM 15040 M	4750	Rear mounted sweeper 150cm - Mechanical Drive

Accessories:

Part Number	Description	Price (£)
HB-SSB-HFKM	Hydraulic emptying for collector box	850
HSZ 180	Hydraulic angling left to right	700
SPA 125	Brush guard 125cm	200
SPA 150	Brush guard 150cm	220
SSB 12540	Collector box 125cm - manual opening	850
SSB 15040	Collector box 150cm - manual opening	890

Part Number	Description	Price (£)
ASH 5040 M	50cm side gully brush	1895
125 010 040	125cm replacement brush	395
150 010 040	150cm replacement brush	445
105 750 500	Replacement gully brush 50cm	135

Brackets & Linkages
 Power Unit
 Attachments
 Accessories
 Consumables



KERSTEN HKM 15040 FITTED TO A TRACTOR 3 POINT LINKAGE

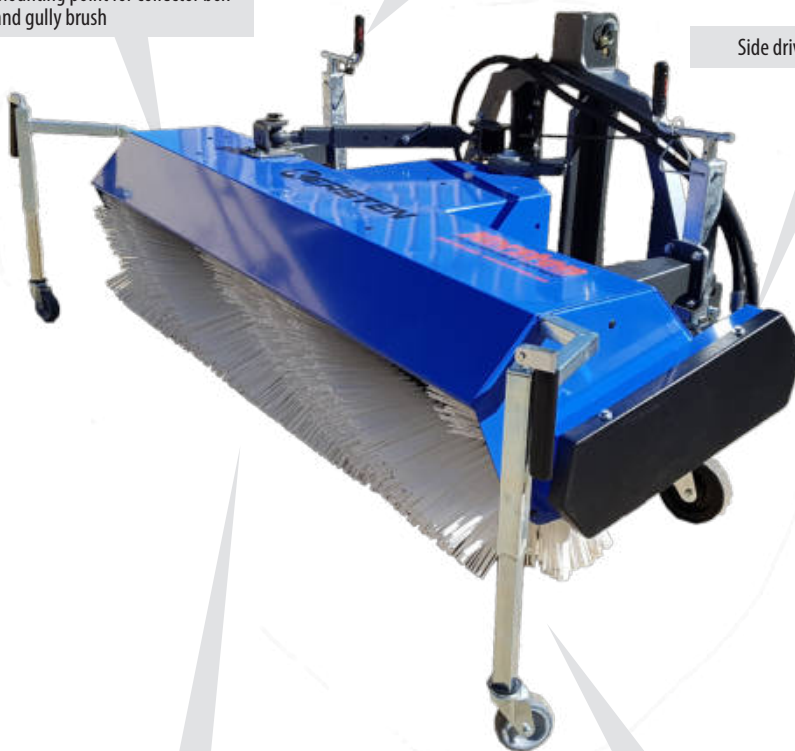
KM 45-Series Sweeper



Mounting point for collector box and gully brush

Sweeper height adjustment levers

Side driven brush



5-row nylon spiral brush

Removable garage stands

Specification

- Includes garage stands
- Folded steel frame construction
- Brush diameter 45cm
- 2 support wheels 135x40cm with individual lever height adjustment
- Mechanical angling left and right
- Supplied with 2 section, 5 row Combi brush
- Mounting Bracket - ABR45 is Required

The KM 45 series is a versatile sweeper with big performance in a light weight, strong compact chassis. Optional accessories include front collector box, gully brushes and front brush guard. When choosing the correct sweeper for your application you should consider the width of the power unit, oil flow or PTO horsepower available to power the sweeper and capacity to lift the sweeper, with a full collector if required. It will fit a wide variety of applications, including; John Deere 2 or 3 series, Kubota B and ST Series or Iseki TM and TH.

Our Sweepers are fitted with a 5 row stiff spiral brush for moving large debris and dirt. Sweeping height is adjusted by heavy duty gauge wheels — each wheel is adjusted individually for precise positioning of the brush. The sweeper is geared for low speed, high torque applications, such as removing soil in block paving or tarmac. We can change this on request, to suit other applications where lighter material must be moved, such as snow.

Model Number	Price (£)	Description	Part Number	Description	Price (£)
KM 13045 H	3975	Front mounted sweeper 130cm - hydraulic drive.	ABR45US	Bracket for John Deere Quick-Hitch	650
KM 15045 H	4425	Front mounted sweeper 150cm - hydraulic drive.	ABR45KUB	Bracket for Kubota G23, G26	650
KM 16545 H	4695	Front mounted sweeper 165cm - hydraulic drive.	ABR45KD	Bracket for Cat 0 front linkage (with triangle)	895
KM 13045 M	3975	Front mounted sweeper 130cm - mechanical drive	ABR45DP	Bracket for Cat 1 linkage (without triangle)	895
KM 15045 M	4450	Front mounted sweeper 150cm - mechanical drive.	ABR45FM	Bracket for out front mowers	950
KM 16545 M	4695	Front mounted sweeper 165cm - mechanical drive.			

Accessories:

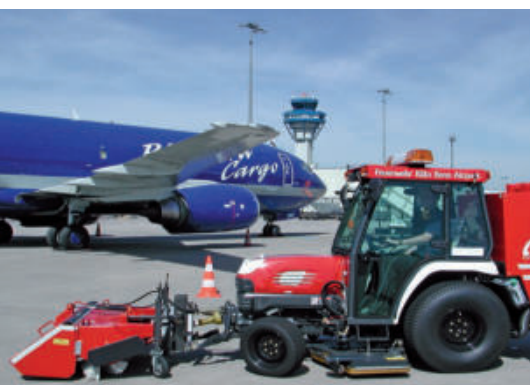
Part Number	Description	Price (£)	Part Number	Description	Price (£)
HSZ 180	Hydraulic angling left to right	700	ASH 4045 KM	Gully brush 40cm - hydraulic drive	1675
GUSPL 13045	Front brush guard 130cm	295	EMV	Electric remote controlled solenoid valves	650
GUSPL 15045	Front brush guard 150cm	340	WAS 100 AUF	Dust suppression kit (100 litres)	1400
GUSPL 16545	Front brush guard 165cm	380	WAS 200 KAT1	Dust suppression kit (200 litres)	1795
SSB 13045 K	Collector box 130cm - hydraulic opening	1500	130 510 045	130cm replacement brush	425
SSB 15045 K	Collector box 150cm - hydraulic opening	1795	150 510 045	150cm replacement brush	500
SSB 16545 K	Collector box 165cm - hydraulic opening	1895	165 510 045	165cm replacement brush	550
ASM 4045 KM	Gully brush 40cm - mechanical drive	1050	105 425 400	40cm replacement gully brush	110

 Brackets & Linkages	 Power Unit	 Attachments	 Accessories	 Consumables
--	--	---	---	---



KM 15045 M SWEEPER FITTED TO AN ISEKI SF370

KM 50-Series Sweeper



Specification

- Diameter 50 cm
- Mechanical Drive PTO
- Includes garage stands
- Folded steel frame construction
- Brush diameter 50cm
- 2 support wheels 200x50cm with individual lever height adjustment
- Hydraulic angling left and right - requires 1 double acting service
- Supplied with 2 section, 5 row Combi brush
- Mounting Bracket - ABR 50 is Required

This is our smaller mid size range of professional, heavy duty sweepers with hydraulic or Mechanical drive. Hydraulic angling to angle the sweeper left and right from the comfort of the seat. The hydraulic angling cylinder is supplied with hoses and 1/2" quick release couplings. They sport even more robust construction techniques than our KM 45 sweepers, with CNC folded and welded, heavy gauge steel. An inboard variable speed hydraulic drive motor, with constant tension duplex drive chain allows greater power to the brush and negates chain slippage.

The pendulum suspension system protects the sweeper and carrier from damage over rough ground. Our Ø 50cm, five row combi brush moves large, heavy debris with ease. Sweeping height is adjusted by heavy duty gauge wheels—each wheel is adjusted individually for precise positioning of the brush. Suitable for front three point linkage, tool carrier or A-frame mounting on tractors between 25 -50hp.

Model Number	Price (£)	Description
KM 13050 H	5750	Front mounted sweeper 130cm - hydraulic drive.
KM 14750 H	6095	Front mounted sweeper 147cm - hydraulic drive.
KM 16550 H	6275	Front mounted sweeper 165cm - hydraulic drive.
KM 13050 M	5775	Front mounted sweeper 130cm - mechanical drive
KM 14750 M	6095	Front mounted sweeper 147cm - mechanical drive.
KM 16550 M	6250	Front mounted sweeper 165cm - mechanical drive.

Part Number	Description	Price (£)
ABR 50 KD	Bracket for Cat 0 front linkage (with triangle)	840
ABR 50 DP	Bracket for Cat 1 linkage (without triangle)	840
ABR 50 FM	Bracket for out front mowers	1050

Accessories:

Part Number	Description	Price (£)
HSZ 180	Hydraulic angling left to right	700
AST 4050 LR	Garage jack stands	425
MP RD 180X80	Heavy duty height adjustment wheels	175
EMV	Electric remote controlled solenoid valves	675
SSB 13050 K	Collector box 130cm - hydraulic opening	1450
SSB 14750 K	Collector box 147cm - hydraulic opening	1500
SSB 16550 K	Collector box 165cm - hydraulic opening	1575
ASH 50 KM 4050 M	Side gully brush for mechanical sweeper - 50cm	2150

Part Number	Description	Price (£)
ASH 50 KM 4050 H	Side gully brush for hydraulic sweeper - 50cm	1850
WAS 100 AUF	Dust suppression kit (100 litres) on sweeper	1400
WAS 100 KAT1	Dust suppression kit (100 litres) on 3PL	1625
WAS 200 KAT1	Dust suppression kit (200 litres) on 3PL	1795
130 510 050	130cm replacement brush	575
147 510 050	147cm replacement brush	620
165 510 050	165cm replacement brush	675
105 750 500	50cm replacement gully brush	135

Brackets & Linkages
 Power Unit
 Attachments
 Accessories
 Consumables



KM 16550 M SWEEPER WITH COLLECTOR AND GULLY BRUSH

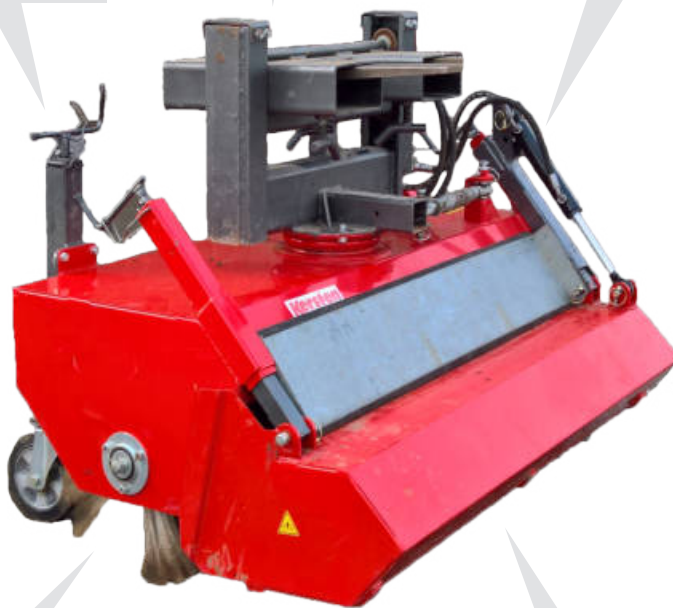
KM 52-Series Sweeper



Large range of mounting frames

Heavy duty height adjustment wheels

Collector box height adjustment



5-row nylon spiral brush

Optional hydraulic opening collector

Specification

- Hydraulic drive
- Inboard hydraulic motor with self adjusting duplex chain to brush
- Substantial steel folded frame construction
- Brush diameter 52cm
- 2 heavy duty support wheels 200x50cm with individual lever height adjustment
- Angling left and right on 300mm bearing
- 3 function hydraulic valve block for sweeping with collecting container open or closed
- Including jack stands to support the sweeper when not connected to power unit
- Supplied with 2 section, 5 row Combi brush
- Requires ABR bracket to suit tractor/loader

This is our smaller mid size range of professional, heavy duty sweepers with hydraulic drive. Hydraulic angling to angle the sweeper left and right from the comfort of the seat. The hydraulic angling cylinder is supplied with hoses and 1/2" quick release couplings.

They sport even more robust construction techniques than our KM 45 sweepers, with CNC folded and welded, heavy gauge steel. An inboard variable speed hydraulic drive motor, with constant tension duplex drive chain allows greater power to the brush and negates chain slippage. The pendulum suspension system protects the sweeper and carrier from damage over rough ground. Our Ø 50cm, five row combi brush moves large, heavy debris with ease. Sweeping height is adjusted by heavy duty gauge wheels—each wheel is adjusted individually for precise positioning of the brush. Suitable for front three point linkage, tool carrier or A-frame mounting on tractors between 25 -50hp.

Model Number	Price (£)	Description
KM 15052 H	2795	Hydraulic sweeper - 150cm
KM 19052 H	2995	Hydraulic sweeper - 190cm
KM 22552 H	3195	Hydraulic sweeper - 225cm

Accessories:

Part Number	Description	Price (£)
HSZ 180	Hydraulic angling left to right	650
SPL 15052	Front brush guard 150cm	395
SPL 19052	Front brush guard 190cm	450
SPL 22552	Front brush guard 225cm	495
SSB 15052 K	Collector box 150cm - hydraulic opening	1250
SSB 19052 K	Collector box 190cm - hydraulic opening	1350
SSB 22552 K	Collector box 225cm - hydraulic opening	1450
ASH 7052 L	Gully brush left hand - hydraulic drive	1695
ASH 7052 R	Gully brush right hand - hydraulic drive	1695

Part Number	Description	Price (£)
ABR 52 HECK	Bracket for rear 3PL	695
ABR 52 FRONT	Bracket for front 3PL	695
ABR 52 KD	Bracket for Cat 0 linkage (with triangle)	695
ABR 52 GS-HA	Bracket for forklift (without float protection)	1195
ABR 52 HT	Bracket for Hoftrac wheel loader	1150
ABR 52 EURO	Bracket for loaders over 30HP	1550

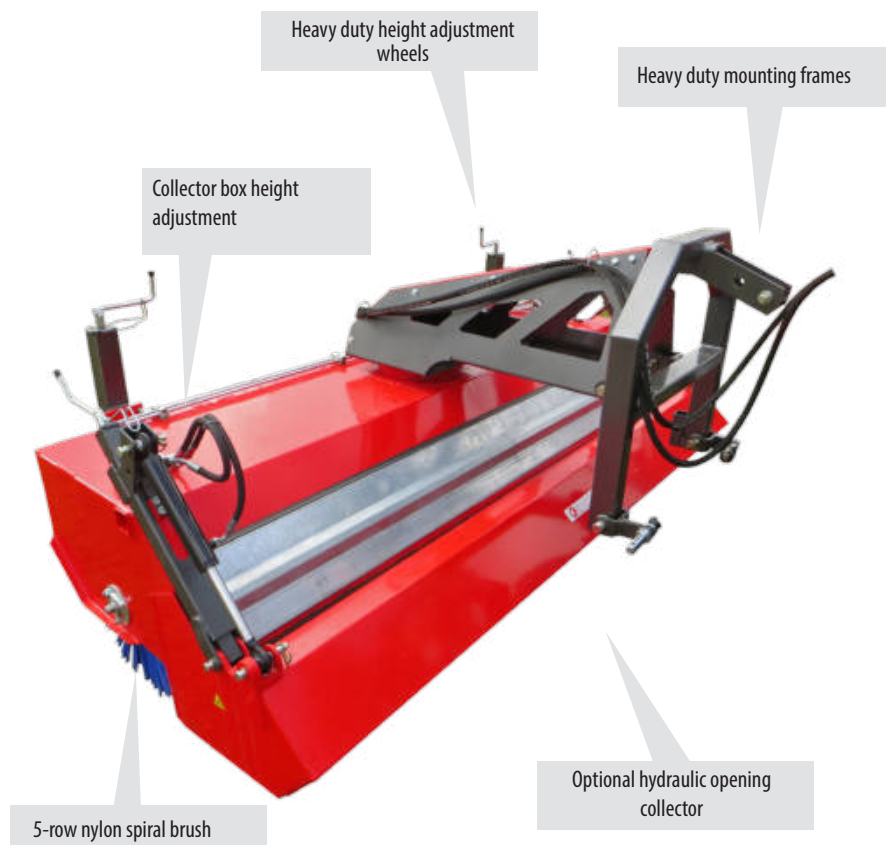
Part Number	Description	Price (£)
MP-LR-ABR 52 KPL	Transport frame with adjustable wheel skids	650
WAS 100 KM 52	Dust suppression kit (100 litres) on sweeper	1550
WAS 200 KM 52	Dust suppression kit (200 litres) on sweeper	1750
150 510 052	150cm replacement brush	610
190 510 052	190cm replacement brush	650
225 510 052	225cm replacement brush	695
105 750 700	70cm replacement gully brush	195

Brackets & Linkages
 Power Unit
 Attachments
 Accessories
 Consumables



KM 52 SWEEPER WITH FORKLIFT MOUNTING BRACKET

KM 60-Series Sweeper



Specification

- Hydraulic drive
- Inboard hydraulic motor with self adjusting duplex chain to brush
- Substantial steel folded frame construction
- Brush diameter 60cm
- 2 heavy duty support wheels 300x100cm with individual lever height adjustment
- Angling left and right on 400mm bearing
- Multi function hydraulic valve block with flow control valve, relief valve, overrun protection and auto collector opening.
- Split side panel to allow easy access to change brush
- Integrated side accessories brackets (left and right)
- Paint RAL 2011 (Orange)
- Prepared for optional KM Control system
- Supplied with 2 section, 5 row Combi brush
- Requires ABR 60 Bracket to attach to tractor

This is our largest rear mounted sweeper for Agricultural Tractors with hydraulic drive and manual angling. The Mounting frame gives incredible support to the sweeper with the weight going through the sweeper from the top where it is strongest. The KM 60 range sports even more robust construction techniques than our KM52 sweepers, with CNC folded and welded, heavy gauge steel. An inboard variable speed hydraulic drive motor, with constant tension duplex drive chain allows greater power to the brush and negates chain slippage.

The pendulum suspension system protects the sweeper and carrier from damage over rough ground. Our Ø 60cm, five row combi brush moves large, heavy debris with ease. Sweeping height is finely adjusted by heavy duty gauge wheels—each wheel is adjusted individually for precise positioning of the brush. Suitable for Rear 3 Point Linkage on Tractors over 60HP.

Model Number	Price (£)	Description
KM 25060 H	4595	Hydraulic sweeper - 250cm
KM 27060 H	4995	Hydraulic sweeper - 270cm

Part Number	Description	Price (£)
ABR 60 HECK	Bracket for rear 3PL	995
ABR 60 GS	Bracket for forklift with float protection	1395

Accessories:

Part Number	Description	Price (£)
HSZ 180 KM 60	Hydraulic angling left to right	795
SPL 25060	Front brush guard 250cm	550
SPL 27060	Front brush guard 270cm	650
SSB 25060	Collector box 250cm - hydraulic opening	1995
SSB 27060	Collector box 270cm - hydraulic opening	2150
ASH 7060 L	Gully brush left hand - hydraulic drive	1695

Part Number	Description	Price (£)
ASH 7060 R	Gully brush right hand - hydraulic drive	1695
WAS 100 KM60	Dust suppression kit (100 litres) on sweeper	1550
WAS 200 KM60	Dust suppression kit (200 litres) on sweeper	1750
250 010 060	250cm replacement brush	720
270 010 060	270cm replacement brush	750
105 750 700	70cm replacement gully brush	195

Brackets & Linkages
 Power Unit
 Attachments
 Accessories
 Consumables



KM60 SWEEPER FITTED ON A REAR 3 POINT LINKAGE

FKM 60L-Series Sweeper



Specification

- Hydraulic Drive
- Inboard hydraulic motor with self adjusting duplex chain to brush
- Substantial steel folded frame construction
- Brush diameter 60cm
- 2 heavy duty support wheels 300x100cm with individual lever height adjustment
- Angling left and right on 400mm bearing
- Multi function hydraulic valve block with flow control valve, relief valve, overrun protection and auto collector opening.
- Split side panel to allow easy access to change brush
- Integrated side accessories brackets (left and right)
- Paint RAL 2011 (Orange)
- Prepared for optional KM Control system
- Supplied with 2 section, 5 row Combi brush
- Requires ABR Mounting Bracket

This is our Lighter mid size range of professional, heavy duty sweepers with hydraulic or Mechanical drive and manual angling. They sport 20% less weight than the FKM 60 range. A brush over-run protection and pressure relief valve prevents wear on the drive. Unique, award winning, parallelogram collector box system allows the sweeper and collector to follow the ground contours more accurately than any other sweeper on the market.

An inboard variable speed hydraulic drive motor, with constant tension duplex drive chain allows greater power to the brush and negates chain slippage. Our Ø 60cm, five row combi brush moves large, heavy debris with ease. The floating collector box comes with heavy duty guide wheels and lockable parking support. Sweeping height is adjusted by heavy duty gauge wheels using just one lever or you have the option of the award winning Kersten KM-Control which features automatic height control which can considerably increase brush life.

Model Number	Price (£)	Description
FKM 13060 LH	4795	Front mounted hydraulic sweeper - 130cm
FKM 15060 LH	4895	Front mounted hydraulic sweeper - 150cm
FKM 13060 LM	4795	Front mounted mechanical sweeper - 130cm
FKM 15060 LM	4895	Front mounted mechanical sweeper - 150cm

Part Number	Description	Price (£)
ABR 60 TELE	Bracket with floating mount for telescopic loader	1995
ABR 60 TELEDP	Bracket combination with floating mount for telescopic loader and tractor front linkage	2450
ABR 60 FRONT	Bracket for front 3PL	995
ABR 60 KD	Bracket for Cat 0 linkage (with triangle)	995
ABR 60 UNIMOG	Front mounting for UNIMOG	3850
ABR 60 EURO	Bracket for loaders over 30HP	1750

Accessories:

Part Number	Description	Price (£)
HSZ 180 KM 60	Hydraulic angling left to right	815
SSBF13060L	Collector box 130cm - hydraulic opening (fully floating)	1695
SSBF15060L	Collector box 150cm - hydraulic opening (fully floating)	1850
ASH 7060 L	Gully brush left hand - hydraulic drive	1695
ASH 7060 R	Gully brush right hand - hydraulic drive	1695
EMV-KM60	Electric remote controlled solenoid valves	895

Part Number	Description	Price (£)
WAS 100 KM 60	Dust suppression kit (100 litres) on sweeper	1550
WAS 200 KM 60	Dust suppression kit (200 litres) on sweeper	1750
KM-Control	Automatic brush height control system	2150
105 750 700	70cm replacement gully brush	195
130 510 060	130cm replacement brush	550
150 510 060	150cm replacement brush	595

Brackets & Linkages
 Power Unit
 Attachments
 Accessories
 Consumables



FKM 15060 FITTED TO A KUBOTA TRACTOR

FKM 60-Series Sweeper



Specification

- Hydraulic Drive
- Inboard hydraulic motor with self adjusting duplex chain to brush
- Substantial steel folded frame construction
- Brush diameter 60cm
- 2 heavy duty support wheels 300x100cm with individual lever height adjustment
- Angling left and right on 400mm bearing
- Multi function hydraulic valve block with flow control valve, relief valve, overrun protection and auto collector opening.
- Split side panel to allow easy access to change brush
- Integrated side accessories brackets (left and right)
- Paint RAL 2011 (Orange)
- Prepared for optional KM Control system
- Supplied with 2 section, 5 row Combi brush
- Requires ABR Mounting Bracket
- Collector box is 23% larger than the FKM60L range

This is our Lighter mid size range of professional, heavy duty sweepers with hydraulic or Mechanical drive and manual angling. They sport a 23% larger collector box than the FKM 60L range. A brush over-run protection and pressure relief valve prevents wear on the drive. Unique, award winning, parallelogram collector box system allows the sweeper and collector to follow the ground contours more accurately than any other sweeper on the market. An inboard variable speed hydraulic drive motor, with constant tension duplex drive chain allows greater power to the brush and negates chain slippage. Our Ø 60cm, five row combi brush moves large, heavy debris with ease. The floating collector box comes with heavy duty guide wheels and lockable parking support. Sweeping height is adjusted by heavy duty gauge wheels using just one lever or you have the option of the award winning Kersten KM-Control which features automatic height control which can considerably increase brush life.

Model Number	Price (£)	Description	Part Number	Description	Price (£)
FKM 16560 H	4995	Front mounted hydraulic sweeper - 165cm	ABR 60 TELE	Bracket with floating mount for telescopic loader	1995
FKM 19060 H	5350	Front mounted hydraulic sweeper - 190cm	ABR 60 TELEDP	Bracket combination with floating mount for telescopic loader and tractor front linkage	2450
FKM 22560 H	5650	Front mounted hydraulic sweeper - 225cm	ABR 60 FRONT	Bracket for front 3PL	995
FKM 25060 H	5995	Front mounted hydraulic sweeper - 250cm	ABR 60 KD	Bracket for Cat 0 linkage (with triangle)	995
FKM 16560 M	4995	Front mounted mechanical sweeper - 165cm	ABR 60 UNIMOG	Front mounting for UNIMOG	3850
FKM 19060 M	5350	Front mounted mechanical sweeper - 190cm	ABR 60 EURO	Bracket for loaders over 30HP	1750
FKM 22560 M	5650	Front mounted mechanical sweeper - 225cm			
FKM 25060 M	5995	Front mounted mechanical sweeper - 250cm			

Accessories:

Part Number	Description	Price (£)	Part Number	Description	Price (£)
HSZ 180 KM 60	Hydraulic angling left to right	815	WAS 200 KM 60	Dust suppression kit (200 litres) on sweeper	1750
SSBF 16560	Collector box 165cm - hydraulic opening (fully floating)	1795	KM-Control	Automatic brush height control system	2150
SSBF 19060	Collector box 190cm - hydraulic opening (fully floating)	1850	ASH 7060 L	Gully brush left hand - hydraulic drive	1695
SSBF 22560	Collector box 225cm - hydraulic opening (fully floating)	1895	ASH 7060 R	Gully brush right hand - hydraulic drive	1695
SSBF 25060	Collector box 250cm - hydraulic opening (fully floating)	1950	165 510 060	165cm replacement brush	625
EMV-KM60	Electric remote controlled solenoid valves	895	190 510 060	190cm replacement brush	650
AKL 22560	Front scraper bar with hydraulic lift and lower - 225cm	3495	225 510 060	225cm replacement brush	675
AKL 25060	Front scraper bar with hydraulic lift and lower - 250cm	3895	250 510 060	250cm replacement brush	695
WAS 100 KM 60	Dust suppression kit (100 litres) on sweeper	1550	105 750 700	70cm replacement gully brush	195

Brackets & Linkages
 Power Unit
 Attachments
 Accessories
 Consumables



FKM 60 SWEEPER WITH FLOATING COLLECTOR BOX

KM 70-Series Sweeper



Single lever height adjustment

Selection of front mounting systems

Collector box support wheels



Floating collector box

5-row nylon spiral brush

Specification

- Hydraulic Drive
- Inboard hydraulic motor
- Steel folded frame construction
- Brush diameter 70cm
- 2 heavy duty support wheels 300x100cm with individual lever height adjustment
- Angling left and right on 400mm bearing
- Multi function hydraulic valve block with flow control valve, relief valve, overrun protection and auto collector opening.
- Split side panel to allow easy access to change brush
- Integrated side accessories brackets (left and right)
- Paint RAL 2011 (Orange)
- Prepared for optional KM Control system
- Supplied with 2 section, 5 row Combi brush
- Requires ABR 70 Bracket

This is our largest range of professional, heavy duty sweepers with hydraulic drive and manual angling. They sport our most robust construction techniques, with CNC folded and welded, heavy gauge steel. Specially designed hydraulic valve system with brush over-run protection and pressure relief valve prevents wear on the drive. Collector emptying is a simple operation. The integrated hydraulic system requires just one double acting hydraulic service from the tractor to operate both the sweeper and collector. An inboard variable speed hydraulic drive motor, with constant tension duplex drive chain allows greater power to the brush and negates chain slippage. Our Ø 70cm, five row combi brush moves large, heavy debris with ease. The floating collector box comes with heavy duty guide wheels and lockable parking support. It acts as a brush guard when fully raised. Height adjustment is made in a single operation, with heavy duty height adjustment wheels that support the brush when in use.

Model Number	Price (£)	Description
KM 25070 H	8995	Front mounted hydraulic sweeper - 250cm
KM 27070 H	9995	Front mounted hydraulic sweeper - 270cm
KM 30070 H	11150	Front mounted hydraulic sweeper - 270cm

Accessories:

Part Number	Description	Price (£)
HSZ 450	Hydraulic angling left to right	895
SPL 25070	Front brush guard - 250cm	595
SPL 27070	Front brush guard - 270cm	625
SPL 30070	Front brush guard - 300cm	650
SSB 25070	Collector box 250cm - hydraulic opening (fully floating)	3195
SSB 27070	Collector box 270cm - hydraulic opening (fully floating)	3250
SSB 30070	Collector box 300cm - hydraulic opening (fully floating)	3550
EMV KM70	Electric remote controlled solenoid valves	950
AKL 25070	Front scraper bar with hydraulic lift and lower - 250cm	4695
AKL 27070	Front scraper bar with hydraulic lift and lower - 270cm	4995
AKL 30070	Front scraper bar with hydraulic lift and lower - 300cm	5395

Part Number	Description	Price (£)
ABR70TELE-DP	Bracket with floating mount for telescopic loader	2650
ABR70FRONT	Bracket for front 3PL	1950
ABR70GS	Bracket for forklift (with float protection)	1950
ABR70UNIMOG	Front mounting for UNIMOG	3895
ABR60EURO	Bracket for loaders over 30HP	1950

Part Number	Description	Price (£)
WAS 200 KM 70	Dust suppression kit (200 litres) on sweeper	1950
KM-Control	Automatic brush height control system	2150
ASH 8570 L	Gully brush left hand - hydraulic drive	2150
ASH 8570 R	Gully brush right hand - hydraulic drive	2150
250 510 070	250cm replacement brush	825
270 510 070	270cm replacement brush	850
300 510 070	300cm replacement brush	895
105 750 850	85cm replacement gully brush	350

	Brackets & Linkages		Power Unit		Attachments		Accessories		Consumables
--	---------------------	---	------------	---	-------------	---	-------------	---	-------------



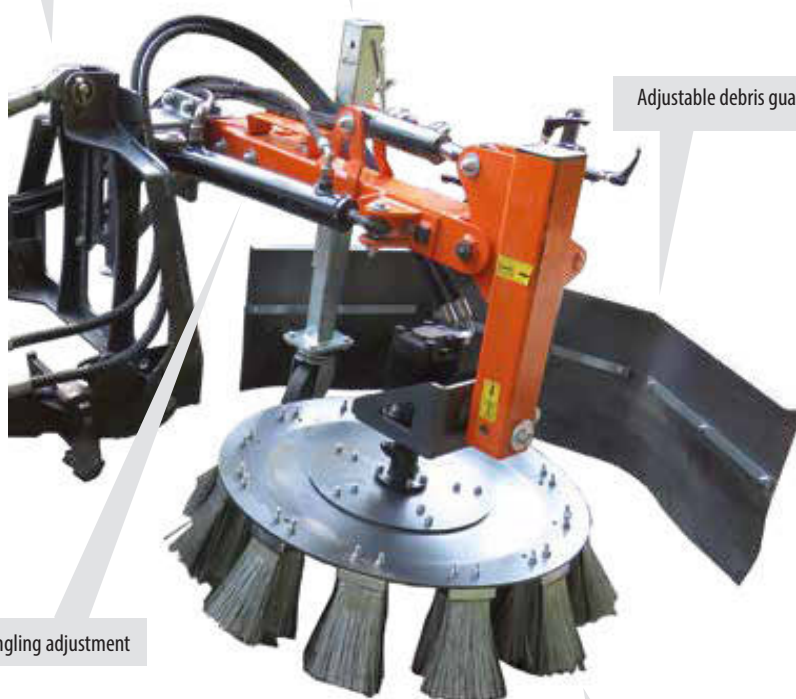
KM 25070 H SWEEPER FITTED TO AN AGRICULTURAL TRACTOR

UB6080 H-Series WeedBrush



Selection of front mounting frames

Single lever height adjustment



Adjustable debris guard

Hydraulic angling adjustment

Replaceable versa brushes

Specification

- Hydraulic Drive - requires 25l/min
- Brush plate sold separately
- Suitable for 60cm and 80cm brush plate
- Hydraulic Drive Brush Plate
- Hydraulic Angling 0-90 degrees
- Variable Working Range of 0-110 cm
- Hydraulic plate and arm adjustment
- Adjustable Brush Guard
- Weight 167kg

The UB 6080 H is a professional tractor mounted Weedbrush for compact and sub-compact tractors or out-front mowers with Hydraulic Drive and lifting mechanism. All the functions are controlled from the cab with the tractor levers or joystick system, controlling the brush angle in all axis, the angle of the arm relative to the tractor and the engagement of the brush. The weed brush can be fitted with softer versa brushes for working on block paving and large areas, or aggressive Hausa (Wire rope) brushes for ripping through turf edges.

The UB 6080 H range sports robust construction techniques, with CNC folded and welded, heavy gauge steel, making them lightweight and compact, but extremely tough. The head is adjustable in angle to reduce brush wear, apply greater pressure to the surface or deal with cambers. An adjustable guard and low brush speeds work together to keep debris close to the brush. Brushing height is finely adjusted by a heavy duty gauge wheel - adjusted on a spindle for precise positioning of the brush, larger adjustments can be made by the linkage.

Model Number	Price (£)	Description
UB 6080 H ABR	7495	Weedbrush with hydraulic drive and manual brush plate adjustment.

Part Number	Description	Price (£)
ABR UB DP	Bracket for front linkage (without triangle)	850
ABR UB KD	Bracket for front linkage (with triangle)	850
ABD UB FM	Bracket for out front mowers	950

Accessories:

Part Number	Description	Price (£)
BT 060 FL	Brush plate 60cm with versa brushes	895
BT 080 FL	Brush plate 80cm with versa brushes	1195
BT 080 DS-KU	Brush plate with plastic coated hausa brushes	1195
HSZ 180 UB	Hydraulic angling	650
ST-UB	Control unit including hydraulic brush plate adjustment	2295
ST-UB-JS	Control unit with joystick including hydraulic brush plate adjustment	2595

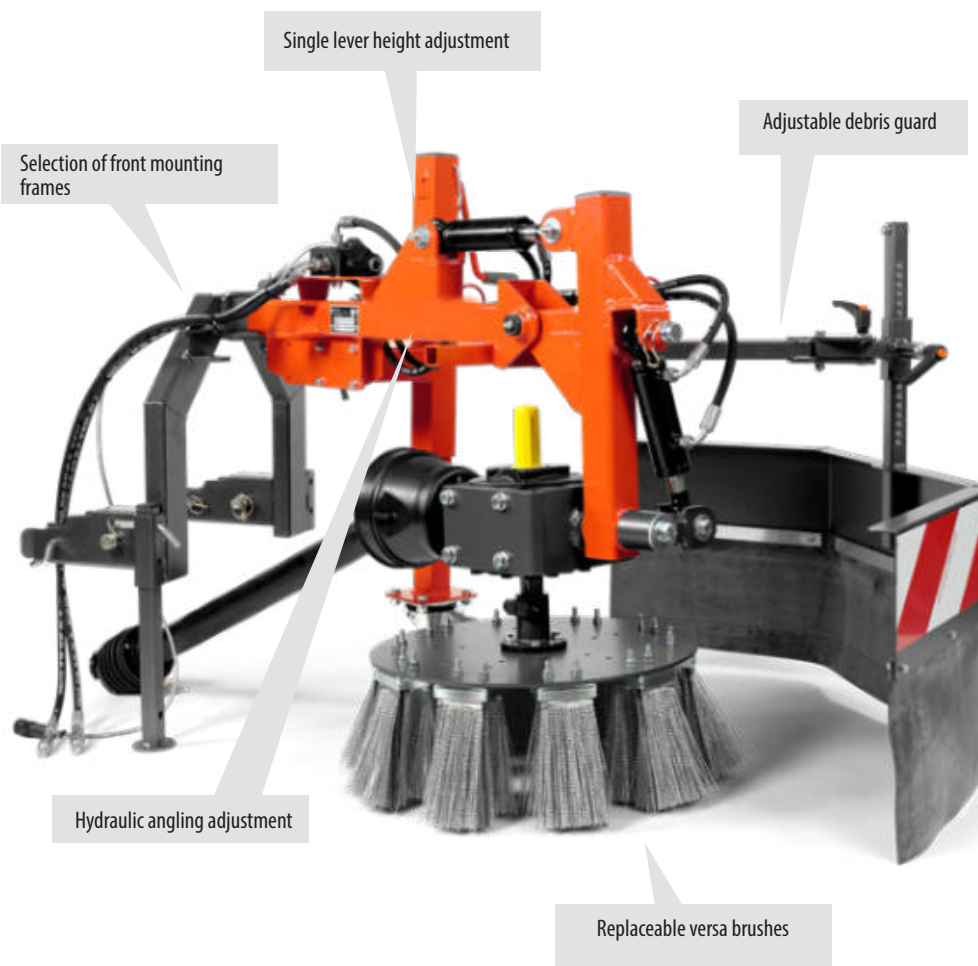
Part Number	Description	Price (£)
ST-UB-RC	Control unit with remote control including hydraulic brush plate adjustment	2950
KANTENSCHN	Edging disk	1195
700 000 135	Steel versa brush	10.95 each
700 000 135N	Nylon versa brush	10.95 each
700 000 136A	Hausa brush set with bracket	21.95 each
106 780 200	Hausa brush sections	10.95 each
750 000 135	Heavy duty steel versa brush	16.95 each

 Brackets & Linkages	 Power Unit	 Attachments	 Accessories	 Consumables
--	--	---	---	---



UB 6080 H WEED BRUSH FITTED TO KARCHER MIC 34

UB6080 MK-Series WeedBrush



Specification

- Mechanically Driven via Front PTO
- Suitable for 80cm brush plate(Brush plate sold separately)
- Requires 26hp minimum
- PTO Drive Brush Plate
- Offset 0-25 degrees
- Variable Working Range of 0-69 cm
- Manual brush angle adjustment (X and Y axis)
- Adjustable Brush Guard
- Weight 157kg
- ABR bracket required

The UB 6080 MK is a professional tractor mounted Weedbrush for compact and sub-compact tractors or out-front mowers with a front PTO and lifting mechanism. The 80cm brush is driven from the tractor PTO. One hydraulic service is required for brush offset. The weed brush can be fitted with softer versa brushes for working on block paving and large areas, or aggressive Hausa (Wire rope) brushes for ripping through turf edges.

The UB 6080 MK range sports robust construction techniques, with CNC folded and welded, heavy gauge steel, making them lightweight and compact, but extremely tough. The head is adjustable in angle to reduce brush wear, apply greater pressure to the surface or deal with cambers. An adjustable guard and low brush speeds work together to keep debris close to the brush. Brushing height is finely adjusted by a heavy duty gauge wheel - adjusted on a spindle for precise positioning of the brush, larger adjustments can be made by the linkage.

Model Number	Price (£)	Description
UB 6080 MK ABR	6750	Weedbrush with mechanical drive and manual brush plate adjustment.

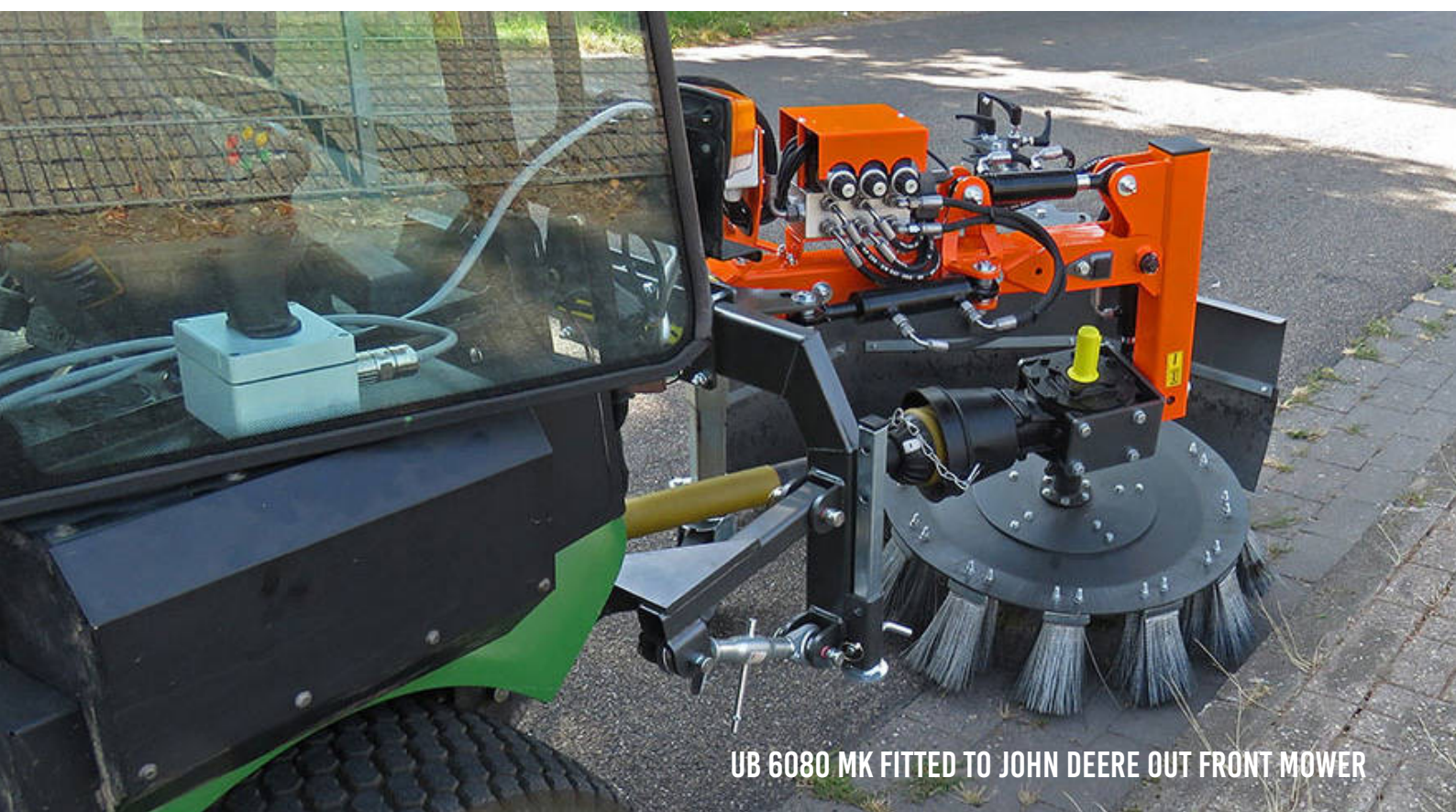
Part Number	Description	Price (£)
ABR UB DP	Bracket for front linkage (without triangle)	850
ABR UB KD	Bracket for front linkage (with triangle)	850
ABDUBFM	Bracket for out front mowers	950

Accessories:

Part Number	Description	Price (£)
BT 060 FL	Brush plate 60cm with versa brushes	895
BT 080 FL	Brush plate 80cm with versa brushes	1195
BT 080 DS-KU	Brush plate with plastic coated hausa brushes	1195
HSZ 180 UB	Hydraulic angling	650
ST-UB	Control unit including hydraulic brush plate adjustment	2295
ST-UB-JS	Control unit with joystick including hydraulic brush plate adjustment	2595

Part Number	Description	Price (£)
ST-UB-RC	Control unit with remote control including hydraulic brush plate adjustment	2950
KANTENSCHN	Edging disk	1195
700 000 135	Steel versa brush	10.95 each
700 000 135N	Nylon versa brush	10.95 each
700 000 136A	Hausa brush set with bracket	21.95 each
106 780 200	Hausa brush sections	10.95 each
750 000 135	Heavy duty steel versa brush	16.95 each

 Brackets & Linkages	 Power Unit	 Attachments	 Accessories	 Consumables
--	--	---	---	---



UB 6080 MK FITTED TO JOHN DEERE OUT FRONT MOWER

UB6080 MH-Series Weedbrush



Specification

- Mechanically Driven via Front PTO
- Brush plate sold separately
- Suitable for 60cm and 80cm brush plate
- Integrated Hydraulic System 30l/min
- Hydraulic Drive Brush Plate
- Angling 0-90 degrees
- Variable Working Range of 0-110 cm
- Hydraulic plate and arm adjustment
- Adjustable Brush Guard
- Weight 216kg

The UB 6080 MH is a professional tractor mounted Weedbrush for compact and sub-compact tractors or out-front mowers with a front PTO and lifting mechanism. Compact tractors don't typically come with enough hydraulic services fitted to easily operate the weed brush functions, so we provide a pump, tank and motors in a self contained hydraulic system. Providing 30 l/m oil flow to run the functions from the tractor PTO. All these functions are controlled from the cab with either a remote control or joystick system, controlling the brush angle in all axis, the angle of the arm relative to the tractor and the engagement of the brush. The weedbrush can be fitted with softer versa brushes for working on block paving and large areas, or aggressive Hausa (Wire rope) brushes for ripping through turf edges.

The UB 6080 MH range sports robust construction techniques, with CNC folded and welded, heavy gauge steel, making them lightweight and compact, but extremely tough. The head is adjustable in angle to reduce brush wear, apply greater pressure to the surface or deal with cambers. An adjustable guard and low brush speeds work together to keep debris close to the brush. Brushing height is finely adjusted by a heavy duty gauge wheel - adjusted on a spindle for precise positioning of the brush, larger adjustments can be made by the linkage.

Model Number	Price (£)	Description
UB 6080 MH ABR	8150	Weedbrush with mechanical drive utilising hydraulic pump and manual brush plate adjustment.

Part Number	Description	Price (£)
ABR UB DP	Bracket for front linkage (without triangle)	850
ABR UB KD	Bracket for front linkage (with triangle)	850
ABDUBFM	Bracket for out front mowers	950

Accessories:

Part Number	Description	Price (£)
BT 060 FL	Brush plate 60cm with versa brushes	895
BT 080 FL	Brush plate 80cm with versa brushes	1195
BT 080 DS-KU	Brush plate with plastic coated hausa brushes	1195
HSZ 180 UB	Hydraulic angling	650
ST-UB	Control unit including hydraulic brush plate adjustment	2295
ST-UB-JS	Control unit with joystick including hydraulic brush plate adjustment	2595

Part Number	Description	Price (£)
ST-UB-RC	Control unit with remote control including hydraulic brush plate adjustment	2950
KANTENSCHN	Edging disk	1195
700 000 135	Steel versa brush	10.95 each
700 000 135N	Nylon versa brush	10.95 each
700 000 136A	Hausa brush set with bracket	21.95 each
106 780 200	Hausa brush sections	10.95 each
750 000 135	Heavy duty steel versa brush	16.95 each

Brackets & Linkages
 Power Unit
 Attachments
 Accessories
 Consumables



UB 6080 MH WEED BRUSH FITTED TO A KUBOTA OUT FRONT MOWER

UB Easy-Series Weedbrush



Specification

- Hydraulic Drive - requires 25l/min
- 80cm brush plate
- 24 Versa / Hausa Brushes
- Hydraulic Drive Brush Plate
- Fixed 90 degree brush angle
- Mechanical plate and arm adjustment
- Adjustable Brush Guard
- Weight 158kg

The UB Easy is a professional tractor mounted Weedbrush for Tractors over 45hp with Hydraulic Drive and loader or 3 point linkage lifting mechanism. The 85cm diameter head is designed to remove moss and weeds from large areas of tarmac or block paving quickly and easily. The weedbrush can be fitted with softer versa brushes for working on block paving and large areas, or aggressive Hausa (Wire rope) brushes for ripping through turf edges. The UB Easy range sports robust construction techniques, with CNC folded and welded, heavy gauge steel, making them lightweight and compact, but extremely tough. The head is adjustable in angle to reduce brush wear, apply greater pressure to the surface or deal with cambers.

An adjustable guard and low brush speeds work together to keep debris close to the brush. The head can be changed for a vertical brush for fast and effective path edging where it is possible to deposit the material on the verge. Sweeping height is finely adjusted by an optional heavy duty gauge wheel— adjusted on a spindle for precise positioning of the brush, larger adjustments can be made by the loader or linkage. Integrated support stands allow mounting and dismounting of the brush to be effortless.

Model Number	Price (£)	Description
UBEASYPKFL	4150	Hydraulic drive weedbrush with 80cm head and versa brushes
UBEASYPKDS	4150	Hydraulic drive weedbrush with 80cm head and hausa brushes

Part Number	Description	Price (£)
ABR UB DP	Bracket for front linkage (without triangle)	850
ABR UB KD	Bracket for front linkage (with triangle)	850
ABDUBLA	Bracket for front loaders	850

Accessories:

Part Number	Description	Price (£)
MP-BK-UB-EASY	Replaceable head with vertical brushes for path edging	2150
MP-MR-UB-EASY	Flow control valve for stepless speed adjustment	350
MP-LR-UB-EASY	Support wheel for fine height adjustment	495
HSZ 180 UB	Hydraulic angling for UB EASY	650

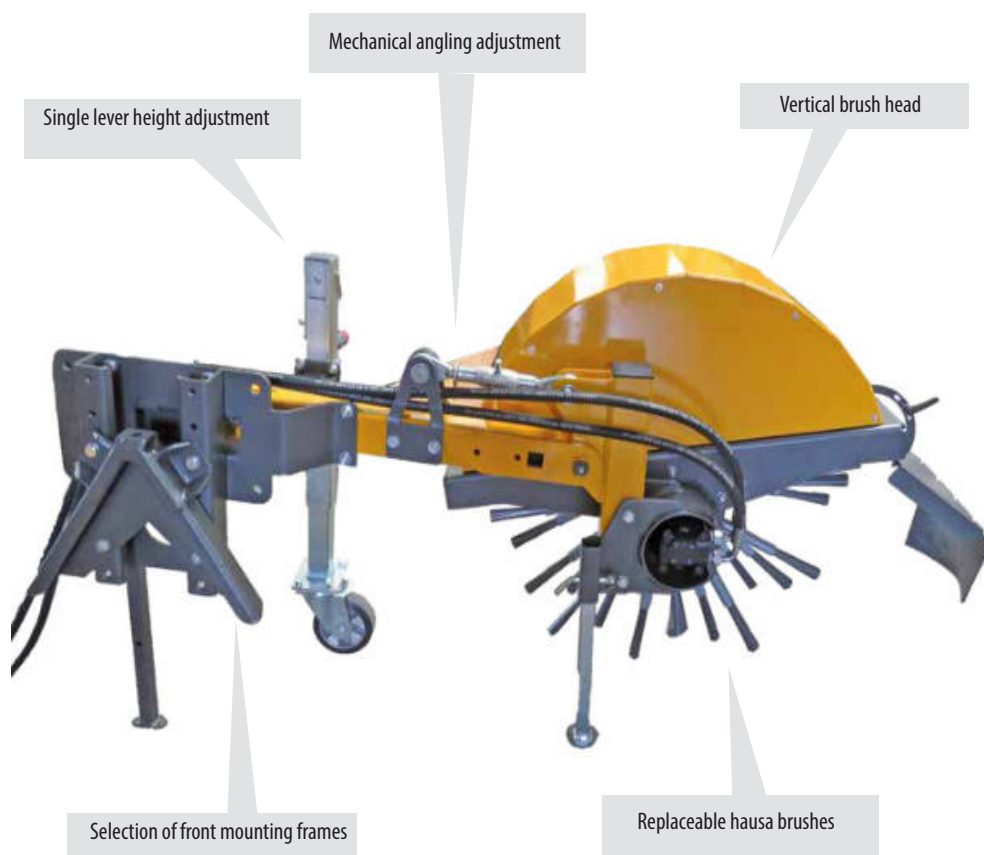
Part Number	Description	Price (£)
700 000 135	Steel versa brush	10.95 each
700 000 135N	Nylon versa brush	10.95 each
700 000 136A	Hausa brush set with bracket	21.95 each
106 780 200	Hausa brush sections	10.95 each
750 000 135	Heavy duty steel versa brush	16.95 each

 Brackets & Linkages	 Power Unit	 Attachments	 Accessories	 Consumables
--	--	---	---	---



UB EASY FL FITTED TO A TRACTOR LOADER

UB Easy VB-Series Weedbrush



Specification

- Hydraulic Drive - requires 25l/min
- 85cm brush plate
- 24 Hausa Brushes
- Hydraulic Drive Brush Plate
- Fixed 90 degree brush angle
- Mechanical plate and arm adjustment
- Adjustable Brush Guard
- Weight 158kg

The UB Easy with vertical brush has been developed specifically for edging verges. The brush is capable of moving large volumes of material, lifting it straight onto the verge. In many instances the arisings from the path edging process can be left on the remaining verge. Doing so allows path edging to be carried out in one simple process without a secondary cleanup procedure. The UB Easy is perfectly suited for loaders and tractor front linkages.

Model Number	Price (£)	Description
UBEASYPAKVB	4895	Hydraulic drive weedbrush with 80cm vertical head and 80cm brushes

Part Number	Description	Price (£)
ABR UB DP	Bracket for front linkage (without triangle)	850
ABR UB KD	Bracket for front linkage (with triangle)	850
ABDUBLA	Bracket for front loaders	850

Accessories:

Part Number	Description	Price (£)
MP-MR-UB-EASY	Flow control valve for stepless speed adjustment	350
MP-LR-UB-EASY	Support wheel for fine height adjustment	495
HSZ 180 UB	Hydraulic angling for UB EASY	650

Part Number	Description	Price (£)
106 780 702	VB replacement brush (30 per set)	18.40 each

	Brackets & Linkages		Power Unit		Attachments		Accessories		Consumables
---	---------------------	--	------------	--	-------------	--	-------------	--	-------------



UB EASY VB WEED BRUSH FITTED TO A LOADER

ThermHit-Series Weed Burner



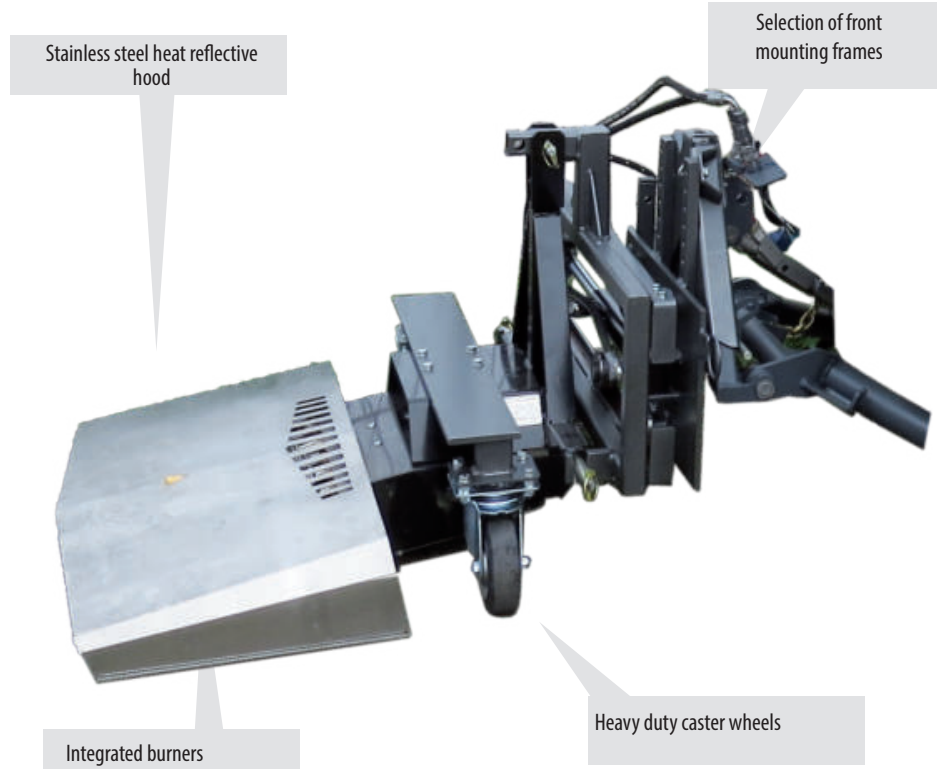
Stainless steel heat reflective hood



Integrated burners



Heavy duty caster wheels



Specification

- Gas - Liquid Propane - (Liquid off-take)
- Capacity - 110kw Gas Consumption - 8.0kg/hour
- Ignition Device - Piezo
- Working width - 1000mm / 1250mm
- Weight - 50Kg
- Capacity per hour - 3000m² @ 3kmh
- Warranty - 1 year
- Complete with:
- Adjustable gas pressure regulator.
- Burner protection shield.

The Thermhit series weedburners are compact and light weight. They use a combination of direct flame and radiated heat to treat the weeds, causing the cells to coagulate, which makes the plant wilt and die. The Thermhit is fitted with an extremely low design, for great access under benches and other obstacles. Its light weight makes it ideal for fitting to smaller vehicles such as quad bikes and ride on mowers.

The burner is operated by an electric ignition panel, which can be mounted neatly onto the carrier vehicle. A gas bottle carrying frame can also be mounted allowing easy transportation of the gas. Heavy duty castor wheels provide support for the attachment and allow use over many surface types. Working widths from 75cm to 125cm allow a wide variety of possibilities for using the system in conjunction with different carrier vehicles and in either narrow pathways or open spaces.

Model Number	Price (£)	Description
TWB 100 ABR	6850	Front mounted weed burner - 100cm
TWB 125 ABR	10350	Front mounted weed burner - 125cm

Accessories:

Part Number	Description	Price (£)
HFTH-015	Thermal lance attachment	495
TWBG120LPG	2x 85litre gas tanks with lights and warning signs	4550
TWBG240LPG	2x 120litre gas tanks with lights and warning signs	4550
20000223	Gas hose set 6m	650
90007830	Fire extinguisher 1 litre	105
90007819	Gas leak detection spray	17.95

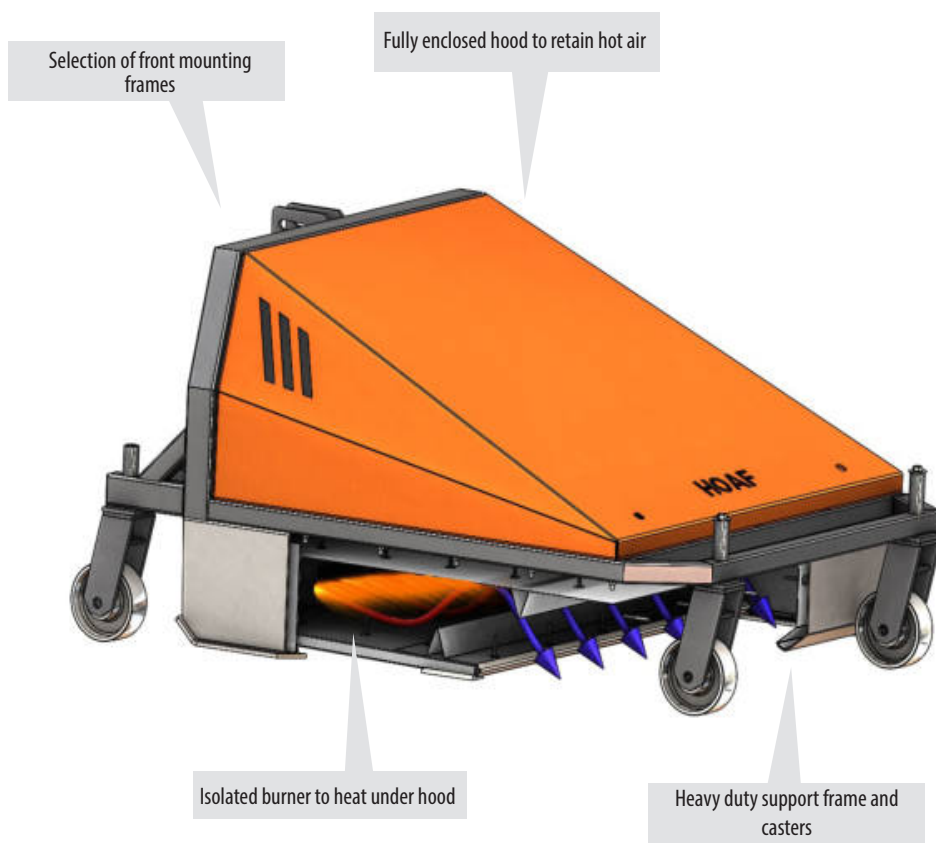
Part Number	Description	Price (£)
ABR TWB KD	Mounting bracket for Cat 0 linkage (with triangle)	795
ABR TWB DP	Mounting bracket for linkage (without triangle)	795
ABR TWB FM	Mounting bracket for out front mowers	850
ABR TWB TELE	Mounting bracket for telescopic loaders	1895

Brackets & Linkages
 Power Unit
 Attachments
 Accessories
 Consumables



HOAF THERMHIT 100 FITTED TO A JOHN DEERE WITH FRONT LINKAGE

WeedAir-Series Weed Burner



Specification

- Capacity - 73kw Gas Consumption - 4.9kg/hour
- Ignition Device - Piezo
- Warranty - 1 year
- Complete with:
- Adjustable gas pressure regulator.
- Burner protection shield.
- 2 x 85L Bottles and Frame sold separately

The WeedAir series uses its hood to trap and heat a pocket of air. This system is extremely efficient and uses much less gas than direct flame and radiated heat, whilst also providing greater protection from fire risk by insulating the flame, so it is not in direct contact with the ground or weeds being treated.

The WeedAir system is available at 100cm working width and 120cm, allowing an extremely diverse range of applications, from narrow paths to open spaces. The hood is supported by heavy duty castors, fitted at the front and rear, supporting the machine and allowing it to be used on many types of hard surface. The burner is operated by an electric ignition panel, which can be mounted neatly onto the carrier vehicle. A gas bottle carrying frame can also be mounted allowing easy transportation of the gas.

Model Number	Price (£)	Description
HFWA 100 M	21000	Front mounted hot air weed burner - 100cm
HFWA 120 M	22750	Front mounted hot air weed burner - 120cm

Accessories:

Part Number	Description	Price (£)
HSV-TWB WS	Hydraulic side adjustment for WeedAir	3295
HFTH-015	Thermal lance attachment	495
TWBG120LPG	2x 85litre gas tanks with lights and warning signs	4550
TWBG240LPG	2x 120litre gas tanks with lights and warning signs	4550
20000223	Gas hose set 6m	650
20000323	Side exhaust for weeding edges	1950
90007830	Fire extinguisher 1 litre	105
90007819	Gas leak detection spray	17.95

Part Number	Description	Price (£)
ABR TWB KD	Mounting bracket for Cat 0 linkage (with triangle)	795
ABR TWB DP	Mounting bracket for linkage (without triangle)	795
ABR TWB FM	Mounting bracket for out front mowers	850
ABR TWB TELE	Mounting bracket for telescopic loaders	1895

Brackets & Linkages
 Power Unit
 Attachments
 Accessories
 Consumables

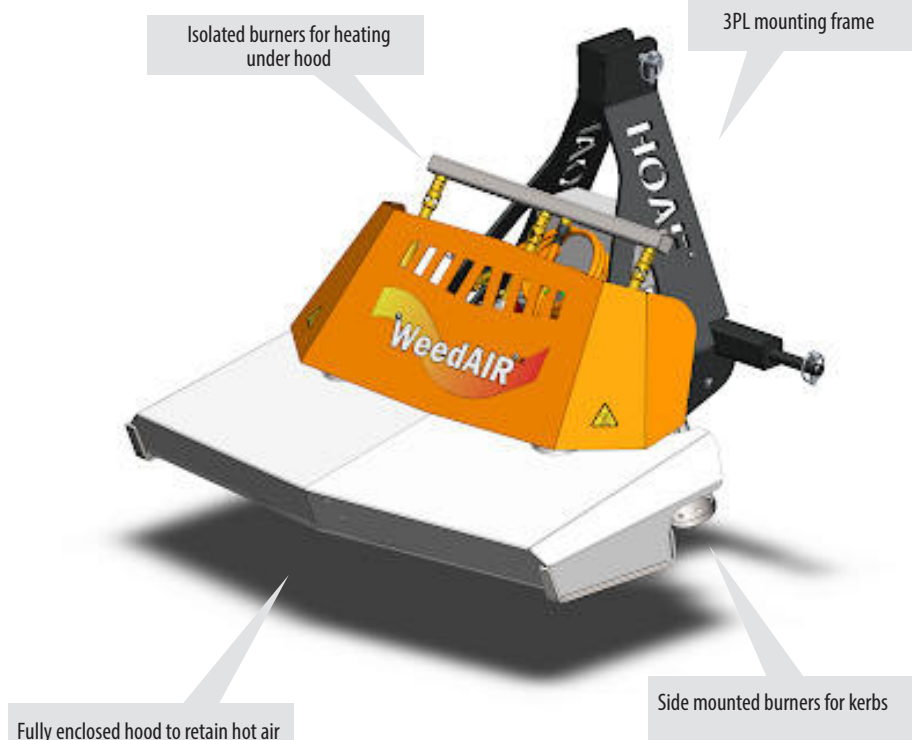


HOAF WEEDAIR FITTED TO A HOLDER MUNICIPAL TRACTOR

WeedAir 1002 IB Weed Burner



Gas carrying system



Specification

- Width burner deck: 100 cm.
- Working width: 100/120cm.
- Gas type: Propane/LPG, vapour take off.
- gas consumption: 1.1 kg per burner.
- Number of burners: 5.
- Main deck: 3 pieces.
- Two side burners (L and R).
- Voltage: 12V.
- Operations:
- Electric from control box, to be placed on tool carrier.
- Individually ignite side ejection.
- Burner hood: Stainless steel, insulated and fitted with stainless steel 310 IR gauze.
- Attachment: 3-point Cat. 1.
- Weight: Approx. 100 kg.

The HOAF WeedAir® 100ib with a working width of 1000 mm is the ideal weed burner to mount on a tool carrier. Due to the effective use of recirculated hot air, the burner is extremely efficient. The combination of high productivity and compactness makes it possible to quickly treat pavements with obstacles such as street furniture. There are 3 burners under the hood and an additional 2 side burners used to treat along kerbs and walls. These can be ignited independently. The Hoaf WeedAir is ideal for burning weed on paths, paving and around obstacles. The gas consumption of the WeedAir 100 is around 1.1kg per hour, making it our most efficient mounted burner. This can treat up to 2000m² per hour at a slow speed.

The HOAF Mounted burners are balanced very well, which results in simple operation. The gas consumption can be adjusted using the gas control valve which results in gas efficient operation. Thanks to the low burner cover it is possible to easily burn under benches. The WeedAir 100 uses Liquid Propane Gas bottles with gas off-take available in kits for 3 point linkage or flat bed mounting. The bottle carrier is purchased separately, to suit the tool carrier in question.

Model Number	Price (£)	Description
HFWA 1002 IB	11950	Front mounted weed burner - 100cm

Part Number	Description	Price (£)
ABR TWB KD	Mounting bracket for Cat 0 linkage (with triangle)	795
ABR TWB DP	Mounting bracket for linkage (without triangle)	795
ABR TWB FM	Mounting bracket for out front mowers	850
ABR TWB TELE	Mounting bracket for telescopic loaders	1895

Accessories:

Part Number	Description	Price (£)
20000509	Gas carrying kit	1250
TWBG120LPG	2x 85litre gas tanks with lights and warning signs	4550
TWBG240LPG	2x 120litre gas tanks with lights and warning signs	4550
20000529	Proection bar and support wheels	1600
90007830	Fire extinguisher 1 litre	105
90007819	Gas leak detection spray	17.95

Brackets & Linkages
 Power Unit
 Attachments
 Accessories
 Consumables



HOAF WEEDAIR 100IB FITTED TO AN ELECTRIC ATV

FK-PAK-Series Snow Plough



Specification

- 125 cm working width
- 45 cm high
- spring back blade protection
- 2 adjustable springs
- adjustable ground skids
- adjustable Urethane Scraper
- front mechanical lifting and angling of the snow blade
- including all mountings

This is our range of professional snow ploughs for Ride on Mowers. The FK-PAK Range is light weight and easy to handle, using a single hand lever to control lift, lower and angling functions from your seat. The sprung blade protection prevents damage from contact with street furniture and other objects, ensuring the plough lasts for many seasons. The Kersten ploughs are built with a steep attack angle, to ensure effective clearance of different types of snow and the curve allows it to roll off the blade easily. The FK-PAK system is designed specifically for Kubota, John Deere and Iseki ride on mowers.

Model Number	Price (£)	Description
SCHN 12545 FK-PAK M JOH	1595	Snow blade 125cm working width - for John Deere X Series
SCHN 12545 FK-PAK M KUB	1595	Snow blade 125cm working width - for Kubota GR Series
SCHN 12545 FK-PAK M ISS	1595	Snow blade 125cm working width - for Iseki SXG216
SCHN 12545 FK-PAK JOH	2795	Snow blade 125cm working width with hydraulic lift and angling - for John Deere X Series
SCHN 12545 FK-PAK KUB	2795	Snow blade 125cm working width with hydraulic lift and angling - for Kubota GR Series
SCHN 12545 FK-PAK ISS	2795	Snow blade 125cm working width with hydraulic lift and angling - for Iseki SXG216

Brackets & Linkages
 Power Unit
 Attachments
 Accessories
 Consumables



JOHN DEERE X SERIES WITH SNOW PLOUGH ATTACHMENT

FK-ABR-Series Snow Plough



Specification

- Spring break back protection system
- 2 retracting springs
- Hydraulic or Manual angling device. - (please specify)
- adjustable ground skids
- Mounting frame ABR-SCHN required
- Hydraulic Flow Requirements - 20l/min

This is our range of professional tractor mounted snow ploughs for compact and sub-compact tractors. The SCHN Range is light weight and easy to handle on a smaller tractor with front linkage or lift arms. The sprung blade protection prevents damage from contact with street furniture and other objects, ensuring the plough lasts for many seasons. The Kersten ploughs are built with a steep attack angle, to ensure effective clearance of different types of snow and the curve allows it to roll off the blade easily. When the storm comes you will be ready for action!

Model Number	Price (£)	Description
SCHN 12545 FK-ABR	1495	Snow blade 125cm working width
SCHN 13545 FK-ABR	1650	Snow blade 135cm working width
SCHN 14060 FK-ABR	2250	Snow blade 140cm working width
SCHN 15060 FK-ABR	2495	Snow blade 150cm working width
SCHN 16060 FK-ABR	2650	Snow blade 160cm working width
SCHN 18060 FK-ABR	3195	Snow blade 180cm working width
SCHN 20060 FK-ABR	3495	Snow blade 200cm working width

Accessories:

Part Number	Description	Price (£)
RD-SCHN-G	Castor wheels for supporting the blade	295
BGL-SCHN60	Red and white marker lights	395
WA-FLAG	Marker flags	275

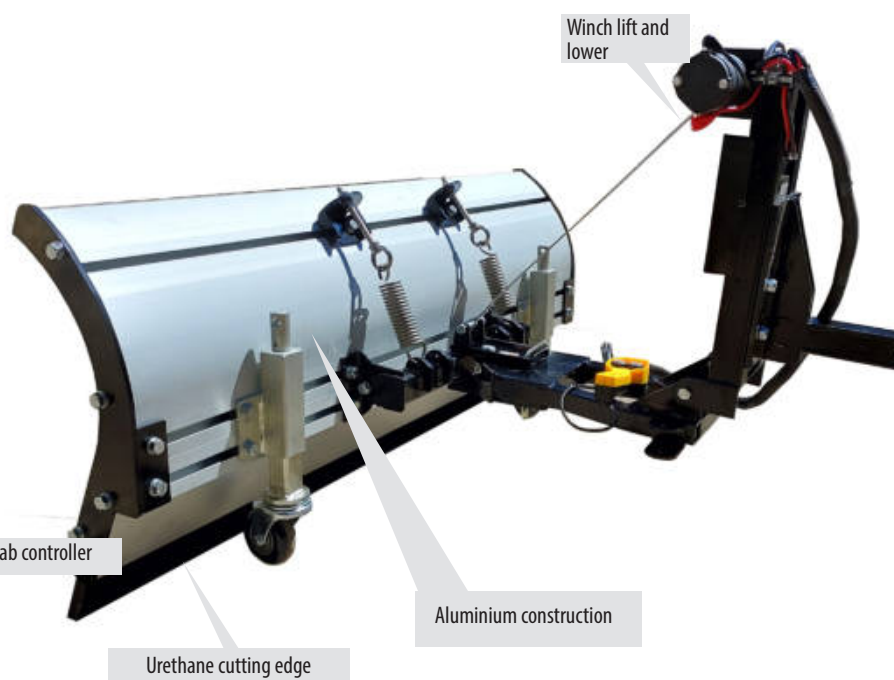
Part Number	Description	Price (£)
ABR SCHN US	Mounting bracket for John Deere Quick Hitch Linkage	495
ABR SCHN KUB B1220	Mounting bracket for Kubota B1220 with Kersten Linkage	495
ABR SCHN KUB G2326	Mounting bracket for Kubota G23/ G26 with Kersten Linkage	495
ABR SCHN KD	Mounting bracket for Cat 0 A Frame	650
ABR SCHN DP	Mounting bracket for Front 3PL	650
ABR SCHN FM	Mounting bracket for out front mowers	895
ABR SCHN HT	Mounting bracket for Hoftac wheel loader	1050

Brackets & Linkages
 Power Unit
 Attachments
 Accessories
 Consumables



KERSTEN SCHN SNOW PLOUGH FITTED TO A KUBOTA RTV

FB-UTV-Series Snow Plough



Specification

- Spring break back protection system
- 2 retracting springs
- Manual angling
- Aluminium construction
- Electric lift and lower
- Width 1.5m/1.8m, height 60cm
- Weight 85kg
- Integrated battery and charger

When you add a Faulkner Brothers Plough to your utility vehicle, you get the perfect solution for ploughing car parks, long driveways or any narrow area where a large truck can't fit. This lightweight contractor-grade aluminium plough comes with electric winch lift/lower and manual angling. The Faulkner Brothers UTV Plough features an easy-to-use mounting system that slides into a 50mm front receiver hitch, which is typically available on most utility vehicles. This allows you to attach/detach the plough in minutes without tools. The Faulkner Brothers UTV Plough comes pre-assembled so there is no assembly required and the optional wheel kit makes it easy to move the plough on and off your vehicle. Faulkner Brothers Moldboards are made from extruded aluminium and anodised for a corrosion resistance you can count on. High quality marine grade stainless steel components finish the plough to give added durability. The Plough is controlled using an ergonomic remote controller, which operates the winch lift/lower on the plough. The blade is further protected by a replaceable urethane edge, this is similar in texture to rubber, but much longer lasting - saving you money in the long run.

The plough utilises an integrated battery system and charger eliminating the electrical load on the carrying vehicle. This makes it ideal for use on electric vehicles.

Model Number	Price (£)	Description
FB-UTV-1.5	3295	Snow blade 150cm working width
FB-UTV-1.8	3495	Snow blade 180cm working width

Accessories:

Part Number	Description	Price (£)
700217	Optional castor wheels	295
700350	Headlamp kit 12v requires 13 pin trailer plug	795
700227	Replacement 1.5 urethane cutting edge	295
700238	Replacement 1.8 urethane cutting edge	325

Brackets & Linkages
 Power Unit
 Attachments
 Accessories
 Consumables



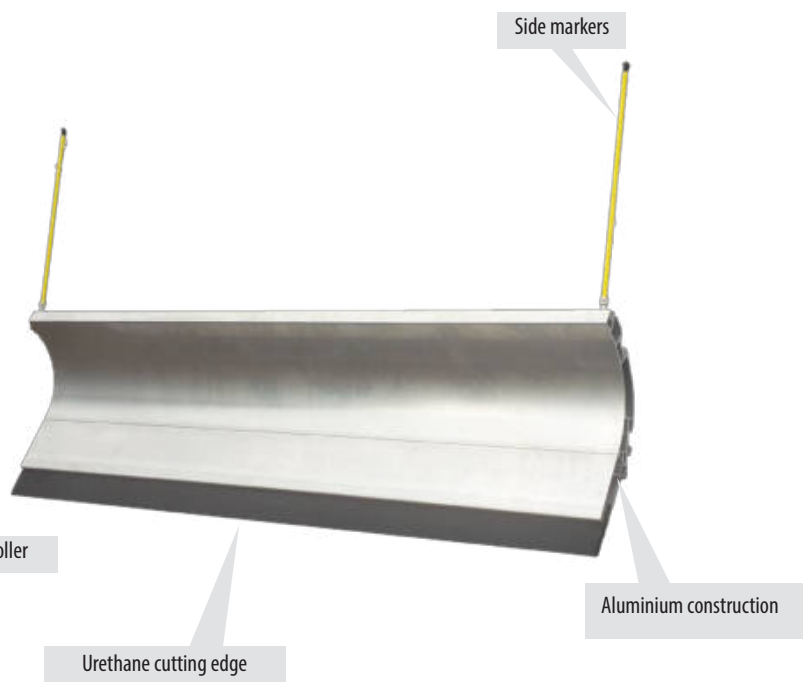
FAULKNER BROTHERS UTV SNOW PLOUGH ON JOHN DEERE GATOR

FB-4x4-Series Snow Plough

**FAULKNER
BROTHERS**



In cab controller



Side markers

Urethane cutting edge

Aluminium construction



Lighting kit



2 inch receiver
connection

Model Number	Price (£)	Description
FB-4x4-Plough	5195	Snow blade 200cm working width

Accessories:

Part Number	Description	Price (£)
700217	Optional castor wheels	295
700350	Headlamp kit 12v requires 13 pin trailer plug	795
700225	Replacement 2m urethane cutting edge	350

Specification

- Spring break back protection system
- 4 retracting springs
- Electric angling device
- Aluminium construction
- Electric lift and lower
- Width 2m, height 60cm
- Weight 85kg

When you add a Faulkner Brothers Plough to your truck, you get the perfect solution for ploughing car parks, long driveways or any narrow area where a large truck can't fit. This lightweight contractor-grade Aluminium plough comes with Electric Lift/Lower and Angling from the comfort of your seat. The Faulkner Brothers 4x4 Plough features an easy-to-use mounting system that slides into a 50mm front receiver hitch, which is sold separately. This allows you to attach/detach the plough in minutes without tools. The Faulkner Brothers 4x4 Plough comes pre-assembled so there is no assembly required and the optional wheel kit make it easy to move the plough on and off your vehicle. Faulkner Brothers Moldboards are made from extruded aluminium and anodised for a corrosion resistance you can count on. High quality marine grade stainless steel components finish the plough to give added durability. The Plough is controlled using an ergonomic thumb stick controller, which operates all the functions on the plough, including lift, lower, and angling left and right. The lighting kit functions are also operated from the same console. The blade is further protected by a replaceable urethane edge, this is similar in texture to rubber, but much longer lasting - saving you money in the long run.

Part Number	Description	Price (£)
M18533	Dacia Duster 2012 on (PathPro 2 only)	395
M18528	Citroen Relay, Fiat Ducato to Peugeot Jumper	395
M18537	Fiat Fullback 2016 onwards	395
M18501	Ford Ranger / Mazda B2500 to 2011	395
M18590	Ford Ranger XL 2012 onwards	395
M18505	Ford Transit Van / Chassis Cab to 2014	395
M18535	Ford Transit Van / Chassis Cab 2014 onwards	395
M18591	Ford Transit Custom 2014 onwards	395
M18504	Isuzu D-Max / Canyon / Chevy Colorado to 2012	395

Part Number	Description	Price (£)
M18513	Isuzu D-Max / Canyon / Chevy Colorado 2012 onwards	395
M18519	Jeep Wrangler 2 and 4 door 2007 onwards	395
M18502	Land Rover Defender 90/100 1983 onwards	395
M18526	Land Rover Discovery II 1998 - 2005	395
M18524	Land Rover Discovery 3 and 4 2005 onwards	395
M18520	Mercedes Sprinter-VW Crafter 2006 to 2013	395
M18522	Mercedes Sprinter 4x4 2006 to 2013	395
M18508	Mitsubishi L200 2006 to 2015	395
M18516	Mitsubishi L200 to 2006	395

Part Number	Description	Price (£)
M18534	Mitsubishi L200 Mid 2015 onwards	395
M18509	Nissan Navara D22 pre 2005	395
M18507	Nissan Navara 2005 onwards	395
M18525	Suzuki Jimny 1998 (call for model type - PathPro2 only)	395
M18512	Toyota HiLux 1998-2005	395
M18503	Toyota HiLux Mk 6 2005 to 2016	395
M18538	Toyota HiLux 2017 onwards	395
M18521	Toyota LandCruiser 1995-2002	395
M18518	Toyota LandCruiser 2003 to 2009	395
M18517	Volkswagen Amarok 2011 onwards	395



Brackets & Linkages



Power Unit



Attachments



Accessories



Consumables



FAULKNER BROTHERS 4X4 SNOW PLOUGH ON ISUZU DMAX

Polaro -Series Spreader



Multiple sizes of plastic hopper



Digital controller



Patented stainless steel agitator



Manual dosing

Low consumption motors

Specification

- Supplied as standard with:
- LAS control panel
- Stainless steel construction
- Battery cable 5 m (3 m at 70 l version), 2.5 mm²
- Control cable 6 m (3 m at 70 l version)
- Hopper with Load relief Roof

POLARO® - perfectly equipped for winter service without a special vehicle With the POLARO®, salt, grit, sand, but also fertilizer can be spread with almost any vehicle that is powered by 12 volts, e.g. Cars, pick-ups, trucks, wheel loaders, mini tractors or quads etc.

All the mounting holes required for the attachment are available in the frame of the POLARO®. Thanks to the infinitely variable regulation of the spreader disc speed on the control unit, the spreading width can be continuously adjusted from 0.8 m (sidewalk) to 6 m (e.g. parking lot) while driving. With the POLARO®, the amount of material to be spread is set manually.

Model Number	Price (£)	Description
Polaro 70	3295	70 litre tailgate spreader with manual dosing
Polaro 110	3495	110 litre tailgate spreader with manual dosing
Polaro 170	3895	170 litre tailgate spreader with manual dosing
Polaro 250	4750	250 litre tailgate spreader with manual dosing

Accessories:

Part Number	Description	Price (£)
72154	Battery cable including bracket - 5m	160
82244	Inverted v to protect agitator	65
73276	LED work light with cable - 3m	190
73483	LED lighting set - magnetic	200
70930	Trolley for spreader transport	110
72155	Saline agitator for slow flowing material	595

Part Number	Description	Price (£)
72107	ATV / quad spreader bracket	205
72105	Basic tailgate spreader bracket	235
72100	Cat 0 3PL spreader bracket	325
72166	Cat 1 3PL spreader bracket	325
72110	Spare wheel spreader bracket	160
72111	Lawn mower spreader bracket	175
72108	Pick-up tailgate spreader bracket	395
73305	Foldable drawbar spreader bracket	995
73455	Lowerable drawbar spreader bracket	2150

72161	24v to 12v converter	220
72117	90cm high spray guard	125
73338	Spinner motor	405
73279	Cable connection (factory fitted)	305
73313	Cable connection for retro fitting	260
81310	Extension cable - 5m	225

Brackets & Linkages
 Power Unit
 Attachments
 Accessories
 Consumables



LEHNER POLARO SPREADER FITTED TO A PICKUP TAILGATE

Polaro E-Series Spreader



Multiple sizes of plastic hopper



Digital controller



Patented stainless steel agitator



Low consumption motors

Electric dosing

Specification

- Supplied as standard with:
- LAS 4 control panel
- Stainless steel construction
- Battery cable 5 m (3 m at 70 l version), 2.5 mm²
- Control cable 6 m (3 m at 70 l version)
- Hopper with Load relief Roof

POLARO® E - professional winter service with a certain added value With the POLARO® E, salt, grit, sand, but also fertilizer can be spread with almost any vehicle that is powered by 12 volts, e.g. cars, pick-ups, trucks, wheel loaders, mini tractors or quads etc.

All of the mounting holes required for attachment are available in the frame of the POLARO® E. Thanks to the infinitely variable regulation of the spreader disc speed on the control unit, the spreading width from 0.8 m (sidewalk) to 6 m (e.g. parking lot) can be conveniently set and changed while driving. In addition, the dosing of the amount of spreading material on the POLARO® E can be controlled via the control unit.

Model Number	Price (£)	Description
Polaro 70 E	3850	70 litre tailgate spreader with electric dosing
Polaro 110 E	3995	110 litre tailgate spreader with electric dosing
Polaro 170 E	4295	170 litre tailgate spreader with electric dosing
Polaro 250 E	5295	250 litre tailgate spreader with electric dosing

Part Number	Description	Price (£)
72107	ATV / quad spreader bracket	205
72105	Basic tailgate spreader bracket	235
72100	Cat 0 3PL spreader bracket	325
72166	Cat 1 3PL spreader bracket	325
72110	Spare wheel spreader bracket	160
72111	Lawn mower spreader bracket	175
72108	Pick-up tailgate spreader bracket	395
73305	Foldable drawbar spreader bracket	995
73455	Lowerable drawbar spreader bracket	2150

Accessories:

Part Number	Description	Price (£)
72154	Battery cable including bracket - 5m	160
82244	Inverted v to protect agitator	65
73276	LED work light with cable - 3m	190
73483	LED lighting set - magnetic	200
70930	Trolley for spreader transport	110
72155	Saline agitator for slow flowing material	595

72161	24v to 12v converter	220
72117	90cm high spray guard	125
73338	Spinner motor	405
73279	Cable connection (factory fitted)	305
73313	Cable connection for retro fitting	260
81310	Extension cable - 5m	225
72168	Auto dosing via GPS receiver	1150

Brackets & Linkages
 Power Unit
 Attachments
 Accessories
 Consumables



LEHNER POLARO 170 FITTED TO A WHEEL LOADER

Polaro L/XL-Series Spreader



Specification

- POLARO® L/XL control panel
- Stainless steel construction
- Power supply 3 m + 6 m, cross section 4.0 mm²
- Connection cable M12 (power unit to controller), 5 m

High capacity. Optimal range. Perfect operation - POLARO® L / XL POLARO® L and POLARO® XL are „salt spreaders“ that are also ideally suited for large-area and finely dosed application of grit, sand or fertilizer. A vehicle with hydraulic drive or cardan shaft is not necessary for this. The spreader is simply mounted on a vehicle with a loading platform, 12 V connection and sufficient load and off you go.

If you only want to spread sand and grit, please indicate this when ordering, because a reinforced worm gear will then be installed. The infinitely variable setting of the spreading width and the dosage of the spreading quantity is easily made directly on the control unit, regardless of the spreading material, and can be easily changed while driving.

Model Number	Price (£)	Description
Polaro L	9895	380 litre insert hopper spreader
Polaro XL	10595	550 litre insert hopper spreader

Accessories:

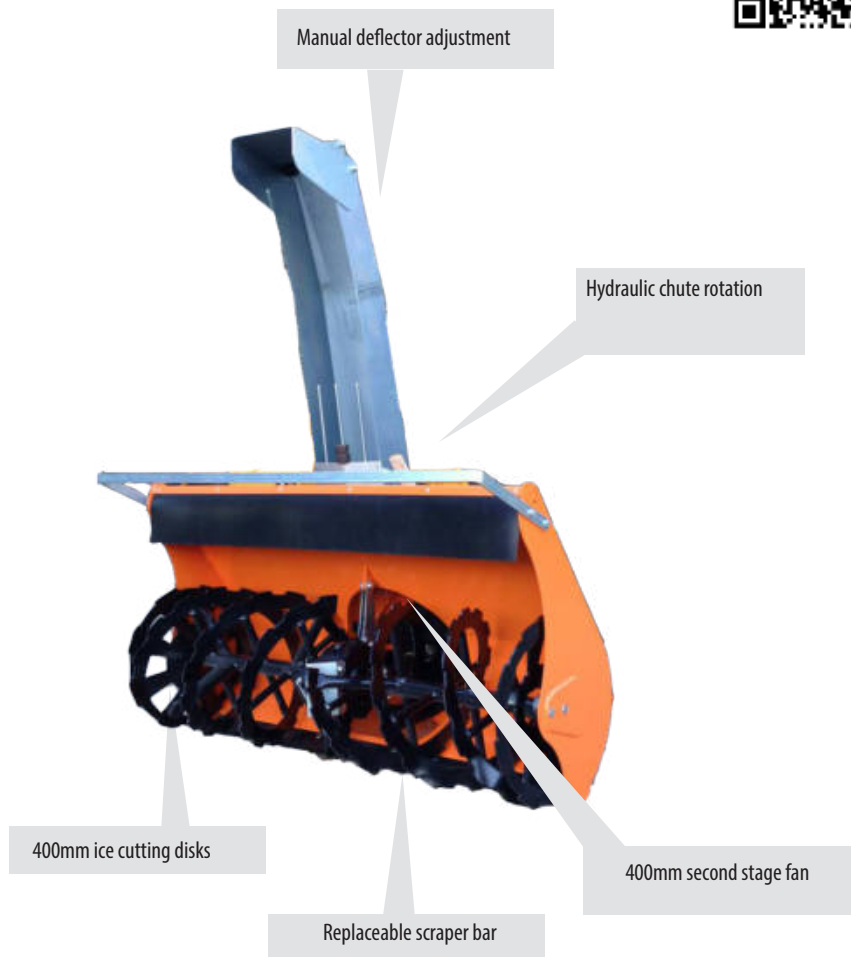
Part Number	Description	Price (£)			
81354	Lashing strap protection tube	15	73368	7 inch LCD reversing camera (retro fitted)	850
73234	AUTO-DOSING via GPS receiver	1695	81495	24v to 12v voltage converter	295
81331	3m battery cable	190	72117	Spray guard 90cm high	125
81332	6m battery cable	240	73311	Forklift pockets	450
73225	Hopper extension for Polaro L plus 194 litres	1250	73338	Spinner motor	450
73226	Hopper extension for Polaro XL plus 264 litres	1495	81424	Controller cable 2m	130
73334	3PL for Polaro L Cat 1 / Cat 2	1995	81425	Controller cable 5m	160
73276	LED work light with 3m cable	190	81426	Controller cable 10m	215
73407	LED rotating beacon	395	73237	Spinner extension pipe	595
73369	7 inch LCD reversing camera (factory fitted)	950	81352	3m lashing strap	35
			81353	4m lashing strap	45

Brackets & Linkages
 Power Unit
 Attachments
 Accessories
 Consumables



LEHNER POLARO L MOUNTED IN A UTILITY VEHICLE

Basic-Series Snow Blower



Specification

- Two-stage snowblower
- Intake height 650mm
- 3-point or adjustable triangle connector
- Cast iron gearbox
- 400 mm auger with ice-breaker
- 400 mm second stage impeller Hydraulic chute rotation
- Hydraulic chute deflector adjustment
- Replaceable scraper bar

VERY IMPORTANT:

1) For a correct performance of the snowblower, it is necessary for the incoming PTO to have a speed rate of about 1000 RPM (otherwise, it is necessary to install a suitable ratio gearbox).

2) If PTO is at 1000rpm, but it is higher than 450mm from the ground, it is necessary to install a reverse gearbox.

The Cerruti Basic is a formidable two-stage snow blower suitable for small tractors and lawn mowers from 14 - 40HP with front lift and power systems. The working height of 650 mm allows clearance of considerable drifts in one pass, while the aggressive 400 front propellers with ice picks break up compacted snow and ice with ease.

A replaceable wear blade and adjustable skids protect the machine and allow it to leave a good level of finish on a variety of surfaces, while hydraulic chimney rotation and hydraulic or manual deflector adjustment lets you place material exactly where you want it.

Model Number	Price (£)	Description
L900B	5350	Basic snow blower 900mm 14-25HP
L1000B	5695	Basic snow blower 1000mm 16-25HP
L1100B	5950	Basic snow blower 1100mm 18-30HP
L1200B	6350	Basic snow blower 1200mm 20-40 HP
L1300B	6795	Basic snow blower 1300mm 22-40 HP
L1400B	7150	Basic snow blower 1400mm 25-40 HP

Please note: specify linkage type with your order

Accessories:

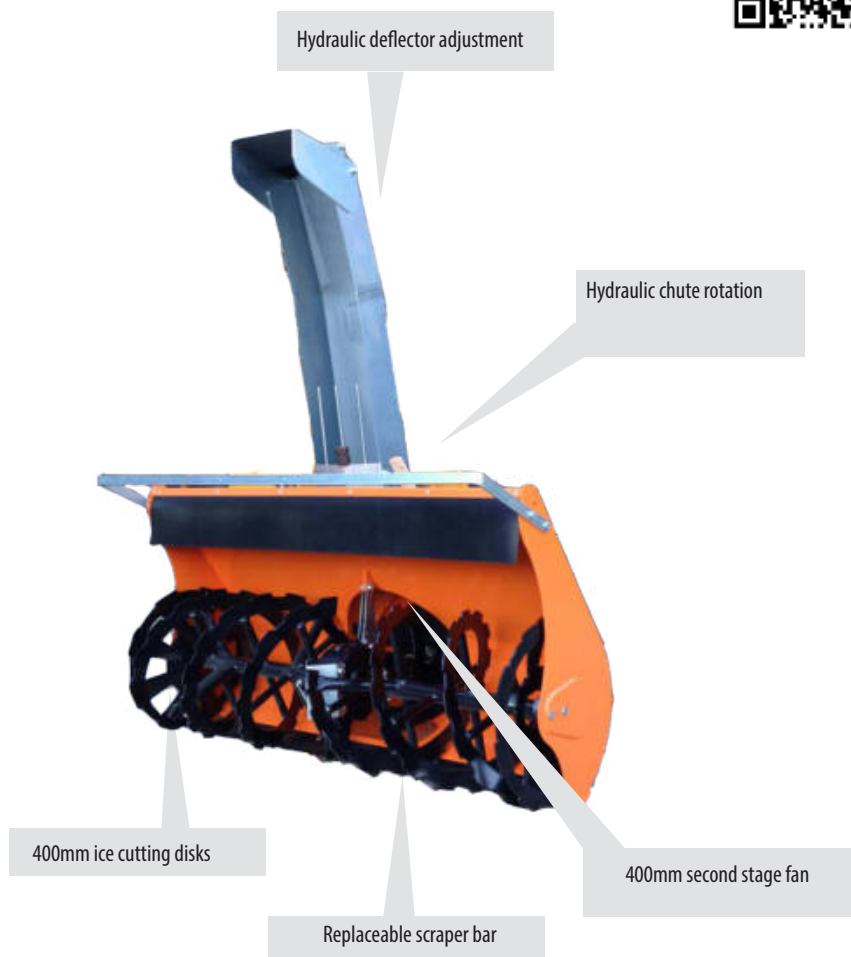
Part Number	Description	Price (£)			
LBASIC-B	Gear box set up to user's needs	1150	LBASIC-I	Single lever control box	400
LBASIC-E	Chute with two hydraulic deflectors	650	LBASIC-J	Two level control box	750
LBASIC-F	Electric chute rotation (without control box)	295	LBASIC-L	Adjustable plastic roller skids	995
LBASIC-G	Electric chute deflector (without control box)	305	LBASIC-U	Card and transmission with safety torque limiter	295
LBASIC-H	Six way solenoid valve (without control box)	345	LBASIC-UJD	Special card and transmission for John Deere Quick Fit	650
			LBASIC-V	Card and transmission for PTO with speed >1000rpm	595

Brackets & Linkages
 Power Unit
 Attachments
 Accessories
 Consumables



JOHN DEERE X758 WITH FRONT MOUNTED SNOW BLOWER

Intermediate-Series Snow Blower



Specification

- Two-stage snowblower
- Intake height 700mm
- 3-point or adjustable triangle connector
- Cast iron gearbox
- 400 mm auger with ice-breaker
- 400 mm second-stage impeller
- Chute installed on thrust ball-bearing
- Hydraulic chute rotation
- Hydraulic chute deflector adjustment
- Replaceable scraper bar

VERY IMPORTANT:

1) For a correct performance of the snowblower, it is necessary for the incoming PTO to have a speed rate of about 1000 RPM (otherwise, it is necessary to install a suitable ratio gearbox).

2) If PTO is at 1000rpm, but it is higher than 360mm from the ground, it is necessary to install a reverse gearbox.

The Cerruti Intermediate takes Snow clearance to another level with a larger two-stage snow blower with widths up to 1600mm suitable for tractors from 26 - 55HP with front lift and power systems. The bigger working height of 700 mm compared to the Basic model allows clearance of even larger drifts in one pass, while the aggressive 400 front propellers with ice picks break up compacted snow and ice with ease.

A replaceable wear blade and adjustable skids protect the machine and allow it to leave a good level of finish on a variety of surfaces, while hydraulic chimney rotation and hydraulic or manual deflector adjustment lets you place material exactly where you want it.

Model Number	Price (£)	Description
L1300I	7450	Intermediate snow blower 1300mm 26-55HP
L1400I	7950	Intermediate snow blower 1400mm 28-55HP
L1500I	8750	Intermediate snow blower 1500mm 30-55HP
L1600I	9150	Intermediate snow blower 1600mm 35-55 HP

Please note: specify linkage type with your order

Accessories:

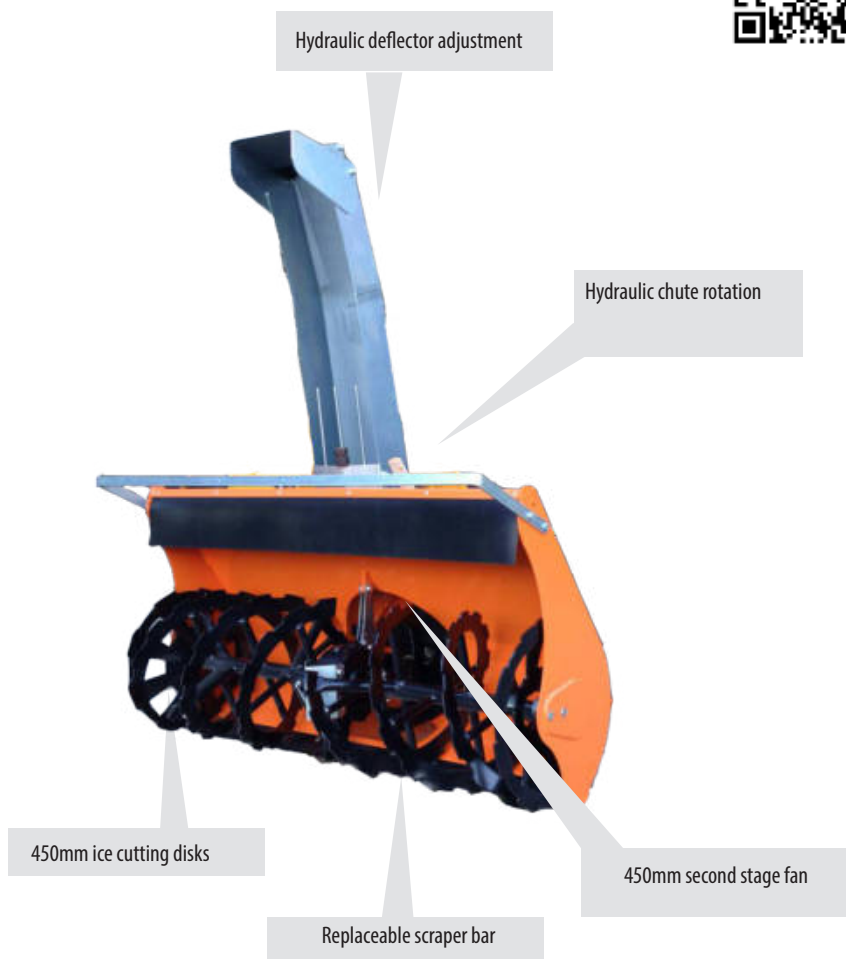
Part Number	Description	Price (£)			
LINT-B	Gear box set up to user's needs	1150	LINT-H	Six way solenoid valve (without control box)	345
LINT-E	Chute with two hydraulic deflectors	650	LINT-I	Single lever control box	400
LINT-K	Fully adjustable chute galvanized steel	1250	LINT-J	Two level control box	750
LINT-F	Electric chute rotation (without control box)	295	LINT-L	Adjustable plastic roller skids	995
LINT-G	Electric chute deflector (without control box)	305	LINT-U	Card and transmission with safety torque limiter	395
			LINT-V	Card and transmission for PTO with speed >1000rpm	615

Brackets & Linkages
 Power Unit
 Attachments
 Accessories
 Consumables



SNOW BLOWER ON A HUSQVARNER OUT FRONT MOWER

Profy-Series Snow Blower



Specification

- Two-stage snowblower
- Intake height 760mm
- 3-point or adjustable triangle connector
- Cast iron gearbox
- 450 mm auger with welded supports and ice-breaker
- 450 mm second stage impeller
- Hand-crank adjustable skid shoes
- Hydraulic chute rotation
- Hydraulic chute deflector adjustment

VERY IMPORTANT:

1) For a correct performance of the snowblower, it is necessary for the incoming PTO to have a speed rate of about 1000 RPM (otherwise, it is necessary to install a suitable ratio gearbox).

2) If PTO is at 1000 RPM but it is higher than 440 mm from the ground, it is necessary to install the 2 axis inverter gearbox (if the height is between 440 and 550mm), or the 3 axis gearbox (if the height is between 560 and 870)

The Cerruti Profy is a fully loaded professional line snow blower, with a larger and more robust 2 stage snow blower with widths up to 1800mm suitable for tractors from 30 - 55HP with front lift and power systems. The extended intake height of 760mm allows even larger drifts to be cleared in one pass, while the larger aggressive 450mm front propellers with ice picks break up the compacted snow and ice easily.

A replaceable wear blade and adjustable skids protect the machine and allow it to leave a good level of finish on a variety of surfaces, while hydraulic chimney rotation and hydraulic deflector adjustment as standard features let you place the material exactly where you want it.

Model Number	Price (£)	Description
L1400P	8695	Profy snow blower 1400mm 30-55 HP
L1500P	9150	Profy snow blower 1500mm 35-55 HP
L1600P	9595	Profy snow blower 1600mm 40-55 HP
L1800P	9995	Profy snow blower 1800mm 45-55 HP
L2000P	10350	Profy snow blower 2000mm 50-55 HP

Please note: specify linkage type with your order

Accessories:

Part Number	Description	Price (£)
LPROFY-I	Single lever control box	450
LPROFY-B	Gear box set up to user's needs	1150
LPROFY-J	Two level control box	750
LPROFY-E	Chute with two hydraulic deflectors	650
LPROFY-L	Adjustable plastic roller skids	995
LPROFY-K	Fully adjustable chute galvanized steel	1295
LPROFY-P	Automatic safety torque limiters on auger	1750
LPROFY-F	Electric chute rotation (without control box)	295
LPROFY-U	Card and transmission with safety torque limiter	395
LPROFY-G	Electric chute deflector (without control box)	305
LPROFY-V	Card and transmission for PTO with speed >1000rpm	650
LPROFY-H	Six way solenoid valve (without control box)	345

Brackets & Linkages
 Power Unit
 Attachments
 Accessories
 Consumables



SNOW BLOWER ON A HUSQVARNER OUT FRONT MOWER

WE 110 -Series Gravel Path Renovator



Adjustable Cat 1 or Cat 2 linkage mounting frame

Simple height adjustment levers

Adjustable side baffles

Replaceable knives for weeding

Specification

- Mechanical Drive PTO < 1000 rpm
- Adjustable Caster Wheels 180 x 80 mm
- Depth Adjustment with Scale
- Working width - 1100mm
- Capacity per hour - 2200m² @ 2kmh
- Warranty - 2 year
- Oil Bath Gear Box
- Height Adjustable Baffles
- Choice of CAT 0 or CAT 1 Mounting Frame
- Choice of Knives to suit different Gravel Surfaces

The Kersten WE 110 with a working width of 1100 mm is the ideal tool for renovating weed ridden or compacted gravel pathways. The tools get between the gravel, decompacting it and loosening the weeds so they can be raked or blown off the surface.

The WE series is sold without tools. Tools must be selected for the application which the machine is being used for. The Angled knife set is for using on water bound surfaces. The knives can be lowered to the correct height so there is minimal interference with the sub base. The knives de-compact the surface. Not only this, but because of the angle, they can cut under the root of the weed and lift the whole plant to the surface, where it can be easily blown or raked off. This not only leaves the surface free of weeds, but also allows it to drain properly, and the filling to be distributed evenly across the path to avoid pot-holes.

An aggressive chisel set with carbide tips can be used to loosen extremely compacted surfaces made from crushed stone or water bound materials. Any weeds will be loosened by the chisels and can be picked out from the loose surface. This will restore the drainage properties of the surface and allow it to be distributed evenly across the path to avoid pot-holes.

The weedbrush can also be fitted to the WE series. This is for use on hard surfaces, such as tarmac or concrete. The brushes loosen the compacted gravel if present and also loosen soil and weeds from the hard surface, so it can be collected. This process will also allow any gravel to be evenly distributed across the surface to avoid pot-holes.

Model Number	Price (£)	Description	Part Number	Description	Price (£)
WE 110 M-DP	7495	Gravel path renovator 110cm working width (without tools)	ABR WE DP	Bracket for tractor rear linkage	included

Accessories:

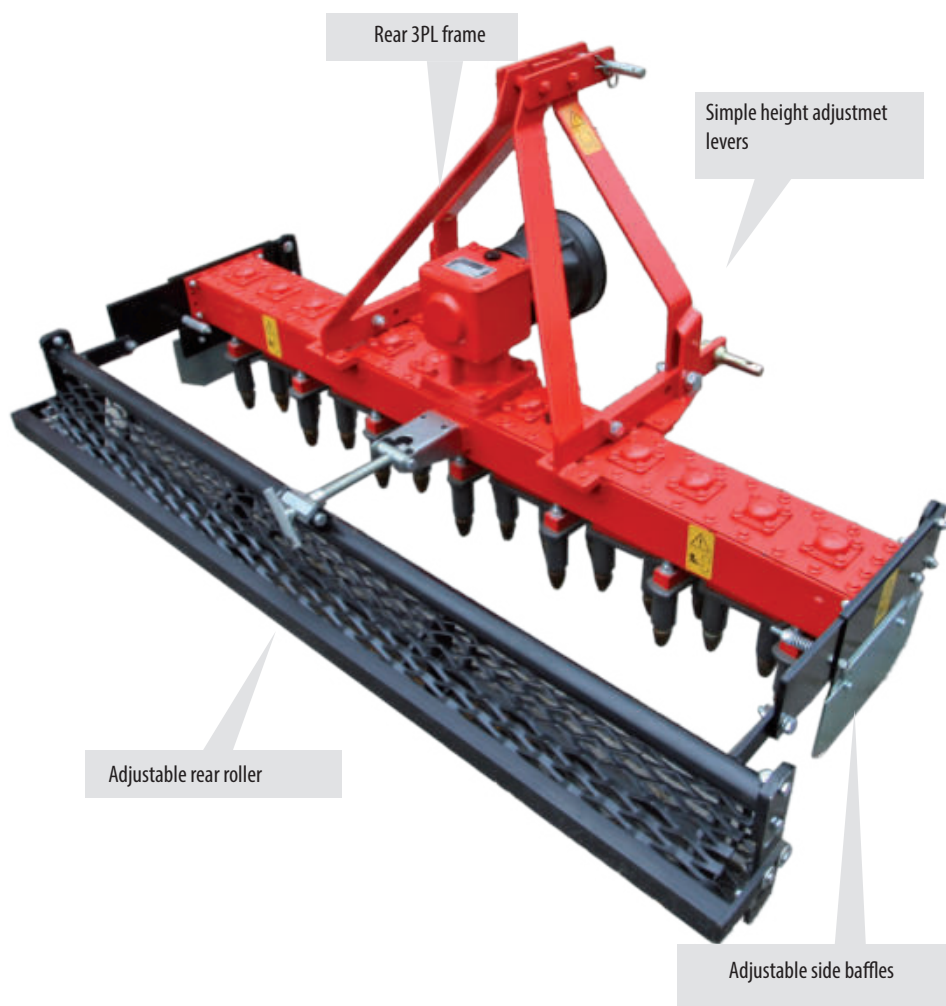
Part Number	Description	Price (£)
WM-SATZ 110	Angled knife set for loose gravel surfaces	550
MEISSEL-SATZ 110	Chiselled set for crushed stone surfaces	1195
BUES-SATZ 110	Thick weedbrush sections for tarmac sub-base	995

 Brackets & Linkages	 Power Unit	 Attachments	 Accessories	 Consumables
--	--	---	---	---



KERSTEN GRAVEL PATH RENOVATOR FITTED TO A KIOTI

WE 150 -Series Gravel Path Renovator



Specification

- Mechanical Drive PTO < 1000 rpm
- Adjustable Roller
- Depth Adjustment with Scale
- Working width - 1500mm
- Capacity per hour - 3000m² @ 2kmh
- Warranty - 2 year
- Oil Bath Gear Box
- Height Adjustable Baffles
- Choice of CAT 0 or CAT 1 Mounting Frame
- Choice of Knives to suit different Gravel Surfaces

The Kersten WE 150 with a working width of 1500 mm is the ideal tool for renovating weed ridden or compacted gravel pathways. The tools get between the gravel, decompacting it and loosening the weeds so they can be raked or blown off the surface.

The WE series is sold without tools. Tools must be selected for the application which the machine is being used for. The Angled knife set is for using on water bound surfaces. The knives can be lowered to the correct height so there is minimal interference with the sub base. The knives de-compact the surface. Not only this, but because of the angle, they can cut under the root of the weed and lift the whole plant to the surface, where it can be easily blown or raked off. This not only leaves the surface free of weeds, but also allows it to drain properly, and the filling to be distributed evenly across the path to avoid pot-holes.

An aggressive chisel set with carbide tips can be used to loosen extremely compacted surfaces made from crushed stone or water bound materials. Any weeds will be loosened by the chisels and can be picked out from the loose surface. This will restore the drainage properties of the surface and allow it to be distributed evenly across the path to avoid pot-holes.

The weedbrush can also be fitted to the WE series. This is for use on hard surfaces, such as tarmac or concrete. The brushes loosen the compacted gravel if present and also loosen soil and weeds from the hard surface, so it can be collected. This process will also allow any gravel to be evenly distributed across the surface to avoid pot-holes.

Model Number	Price (£)	Description	Part Number	Description	Price (£)
WE 150 M-DP	9150	Gravel path renovator 150cm working width (without tools)	ABR WE DP	Bracket for tractor rear linkage	included

Accessories:

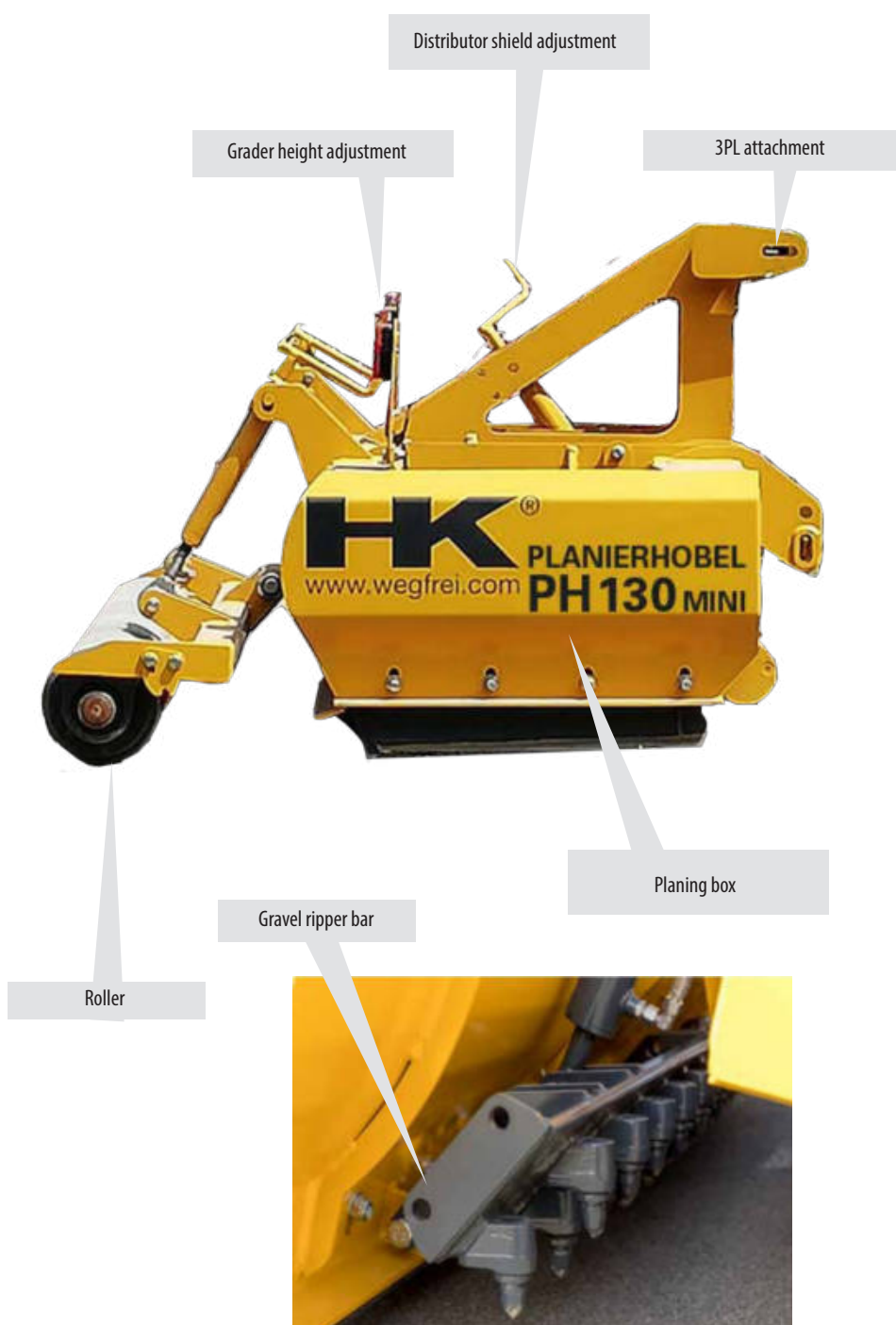
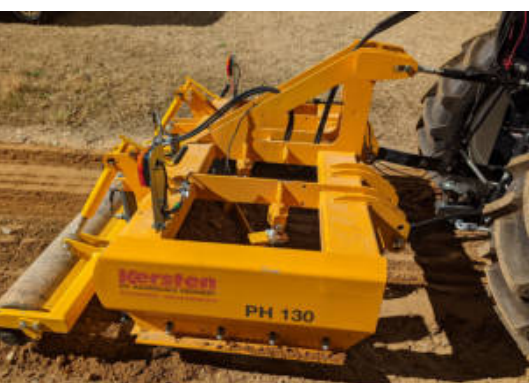
Part Number	Description	Price (£)
WM-SATZ 150	Angled knife set for loose gravel surfaces	750
MEISSEL-SATZ 150	Chiselled set for crushed stone surfaces	1595
BUES-SATZ 150	Thick weedbrush sections for tarmac sub-base	1295
RDS-WE 150	Height adjustable wheels 180x80	1350

 Brackets & Linkages	 Power Unit	 Attachments	 Accessories	 Consumables
--	--	---	---	---



KERSTEN WE 1500 GRAVEL PATH RENOVATOR ON JOHN DEERE X748

Grader HK PH 100-150 MINI



The HK grader is used for the inexpensive, effective maintenance and new construction of water-bound paths, field paths, hiking trails and cycle paths, construction roads or country lanes. It is suitable for spreading and extracting a wide range of bulk materials such as gravel, crushed stone, sand, chippings or sand.

The optional ripper bar fitted with carbide metal chisels that loosen up heavily compacted road surfaces. Existing material is thus processed, moved and redistributed with the grader in those places where it is missing.

When using the grader on water-bound road surfaces, excess or previously newly deposited material can be picked up by the HARDOX re-distribution shield and carried along in the u-shaped frame of the grader. This material fills existing holes and unevenness before being smoothed out by the rear scraper of the grader.

Model	Description	Price (£)	Model	Description	Price (£)
HK 01001	PH 100 Mini Grader - 100cm width	10,995	HK 01011	Distributor shield for the PH 100 Mini	1995
HK 01002	PH 130 Mini Grader - 130cm width	12,595	HK 01012	Distributor shield for the PH 130 Mini	2395
HK 01003	PH 150 Mini Grader - 150cm width	14,195	HK 01013	Distributor shield for the PH 150 Mini	2650
HK 01009	Side shift 200mm for the PH 130 Mini	950	HK 01030	Gravel ripper bar for the PH 130 Mini	5250
HK 01010	Side shift 300mm for the PH 150 Mini	950	HK 01050	Gravel ripper bar for the PH 150 Mini	5495

Brackets & Linkages
 Power Unit
 Attachments
 Accessories
 Consumables



HK PH 130 MINI

LBV 6900-Series Blower



Specification

- Adjustable Caster Wheels 180 x 80 mm
- Depth Adjustment with Scale
- Air Flow - 115m³/min
- Air Reach - 12m
- Warranty - 2 year
- Noise - < 84dB
- Weight - 95kg
- Choice of Mounting Frame

The Kersten LBV 6900 with a noise level under 84dB is the ideal blower for clearing leaves around built up areas such as schools and holiday parks. The LBV 6900 is a professional tractor mounted blower for compact and sub-compact tractors or out-front mowers with Hydraulic or Mechanical drive. The LBV has a light weight, dynamically balanced aluminium fan producing an air velocity of 230 km/h allowing even wet heavy material to be lifted from the surface and blown up to 12 meters. Very low noise is achieved with the use of inlet and outlet silencers and a one piece plastic fan housing. The resulting sound-pressure at the ear of the operator is < 84dB allowing the use of the LBV without the need of ear protection, allowing use in more built up areas. Easy adjustment of the air direction is possible allowing fast results even in places with restricted manoeuvrability.

Large casters allow the machine to follow contours with ease and cushion the impact on all parts of the blower and tractor extending its life. The LBV can be supplied with a variety of mounting frames and PTO speeds to suit tractor front linkage or special brackets for most leading brands of out front mowers. Allowing you to use your mower as a multifunctional tool. The Brackets allow mounting in just a few minutes, getting you on the job quicker. The light weight design (at just 95kg) allows fitment to smaller tractor units. The LBV range come with a fixed outlet chute as a standard feature. This can be replaced at purchase with a chute that can be rotated 360 degrees in order to direct the flow of air in a place of choosing. The hydraulic operation of this makes it comfortable to use from the cab. A set of double acting spool valves is required to operate this accessory.

Model Number	Price (£)	Description
LBV 6900-H	5195	Hydraulic leaf blower with 115m ³ per minute output, with third support wheel to protect outlet chute
LBV 6900-M	5395	Mechanical leaf blower with 115m ³ per minute output, with third support wheel to protect outlet chute

Accessories:

Part Number	Description	Price (£)
LBV-HUT-HD 6900	Hydraulic chute rotation 360 degrees	1350
LBV-HUT-HD 6900E	Electric chute rotation 360 degrees	1750

Part Number	Description	Price (£)
ABR LBV DP	Bracket for rear 3PL	850
ABR LBV KD	Bracket for Cat 0 front linkage	850
ABR LBV FM	Bracket for out front mower	950
ABR LBV US	Bracket for John Deere Quick hitch	850
ABR LBV HECK X900	Bracket for rear 3PL on John Deere X900	995

 Brackets & Linkages	 Power Unit	 Attachments	 Accessories	 Consumables
--	--	---	---	---



KERSTEN LBV BLOWER FITTED TO AN AVANT WHEEL LOADER

MOW-HM 140-Series Rotary Mower



Specification

- Cutting width 1370 mm
- Cutting height from-to 15 - 135 mm
- Weight min. 235 kg
- Drive type mech. / hydr.
- Drive rpm 1000 / 2000 rpm
- Direction of rotation right / left
- Number of knives = 3
- Mulch kit optional

The MOW-H / M 140 CM combination mower offers four possible uses with just one cutting deck. Thanks to the various inserts and attachment options, mowing and collection is possible in one operation, as well as side discharge, rear discharge and mulching. Thanks to the noise-reducing PE cover, the mower is particularly quiet and low in vibration. Cleaning work and knife changes are easily managed thanks to the fold up mower deck.

The mower is available with hydraulic deck lift, allowing fine adjustment of the deck height. The deck is supported by a robust frame and heavy duty wheels fitted in front and behind the mower.

Model Number	Price (£)	Description	Part Number	Description	Price (£)
1318836-8838	3995	140cm mower deck with fixed frame (with side ejection)	1318941	Bracket for Cat 0 linkage	550
1318836-8839	4195	140cm mower deck with fixed frame (with rear ejection)			
1318836-8840	4395	140cm mower deck with fixed frame (with mulching ejection)			

Accessories:

Part Number	Description	Price (£)	Part Number	Description	Price (£)
1318841	Drive kit 1000rpm clockwise	1150	1318844	Drive kit 2000rpm anti-clockwise	1150
1318842	Drive kit 1000rpm anti-clockwise	1150	1318400	BAS universal joint shaft	320
1318843	Drive kit 2000rpm clockwise	1150	1318846	Hydraulic lifting system for maintenance	650
			1319000	Drip free hydraulic couplings	195

 Brackets & Linkages	 Power Unit	 Attachments	 Accessories	 Consumables
--	--	---	---	---



MATEV ROTARY MOWER FITTED TO A NEW HOLLAND BOOMER 20

MOW-HM 160-Series Rotary Mower



Specification

- Cutting width 1570 mm
- Cutting height from-to 28 - 97 mm (with hydraulic frame)
- 28 - 119 mm (with fixed frame)
- Weight min. 246 kg
- Drive type mech. / hydr.
- Drive rpm 1000 / 2000 rpm
- Direction of rotation right / left
- Number of knives = 3
- Mulching kit option
- Grass harrow unit option

The MOW-H / M 160 CM combination mower offers four possible uses with a wider cutting deck. Thanks to the various inserts and attachment options, mowing and collection is possible in one operation, as well as side discharge, rear discharge and mulching. Thanks to the noise-reducing PE cover, the mower is particularly quiet and low in vibration. Cleaning work and knife changes are easily managed thanks to the fold up mower deck.

The mower is available with hydraulic deck lift, allowing fine adjustment of the deck height. The deck is supported by a robust frame and heavy duty wheels fitted in front and behind the mower.

Model Number	Price (£)	Description
1318635-8642	4550	160cm mower deck with fixed frame (with side ejection)
1318635-8643	4650	160cm mower deck with fixed frame (with rear ejection)
1318635-8644	4795	160cm mower deck with fixed frame (with mulching ejection)
1318636-8642	5395	160cm mower deck with hydraulic lifting frame (with side ejection)
1318636-8643	5550	160cm mower deck with hydraulic lifting frame (with rear ejection)
1318636-8644	5695	160cm mower deck with hydraulic lifting frame (with mulching ejection)

Part Number	Description	Price (£)
1318936	Bracket for Cat 0 linkage	595
1318938	Bracket for Cat 1 linkage	895
1318940	Bracket for Cat 1 linkage (without triangle)	950

Accessories:

Part Number	Description	Price (£)
1318645	Drive kit 1000rpm clockwise	1395
1318646	Drive kit 1000rpm anti-clockwise	1395
1318647	Drive kit 2000rpm clockwise	1395

1318648	Drive kit 2000rpm anti-clockwise	1395
1318400	BAS universal joint shaft	320
1318653	Hydraulic lifting system for maintenance	650
1318654	Grass harrow unit	2450

 Brackets & Linkages	 Power Unit	 Attachments	 Accessories	 Consumables
--	--	---	---	---



NEW HOLLAND BOOMER WITH MATEV ROTARY MOWER AND COLLECTION SYSTEM

MOW-HM 190-Series Rotary Mower



Specification

- Cutting width 1870 mm
- Cutting height from-to 15 - 135 mm
- Weight min. 277 kg
- Drive type mech. / hydr.
- Drive rpm 1000 / 2000 rpm
- Direction of rotation right / left
- Number of knives = 3
- Mulch kit optional

The MOW-H / M 190 CM combination mower offers four possible uses with a wider cutting deck. Thanks to the various inserts and attachment options, mowing and collection is possible in one operation, as well as side discharge, rear discharge and mulching. Thanks to the noise-reducing PE cover, the mower is particularly quiet and low in vibration. Cleaning work and knife changes are easily managed thanks to the fold up mower deck.

The mower is available with hydraulic deck lift, allowing fine adjustment of the deck height. The deck is supported by a robust frame and heavy duty wheels fitted in front and behind the mower.

Model Number	Price (£)	Description
1318921-8928	6895	190cm mower deck (with mulching ejection)

Part Number	Description	Price (£)
1318922	Bracket for Cat 0 linkage	595
1318924	Bracket for Cat 1 linkage	795
1318926	Bracket for Cat 1 linkage (without triangle)	895

Accessories:

Part Number	Description	Price (£)
1318929	Drive kit 1000rpm clockwise	1595
1318930	Drive kit 1000rpm anti-clockwise	1595
1318931	Drive kit 2000rpm clockwise	1595

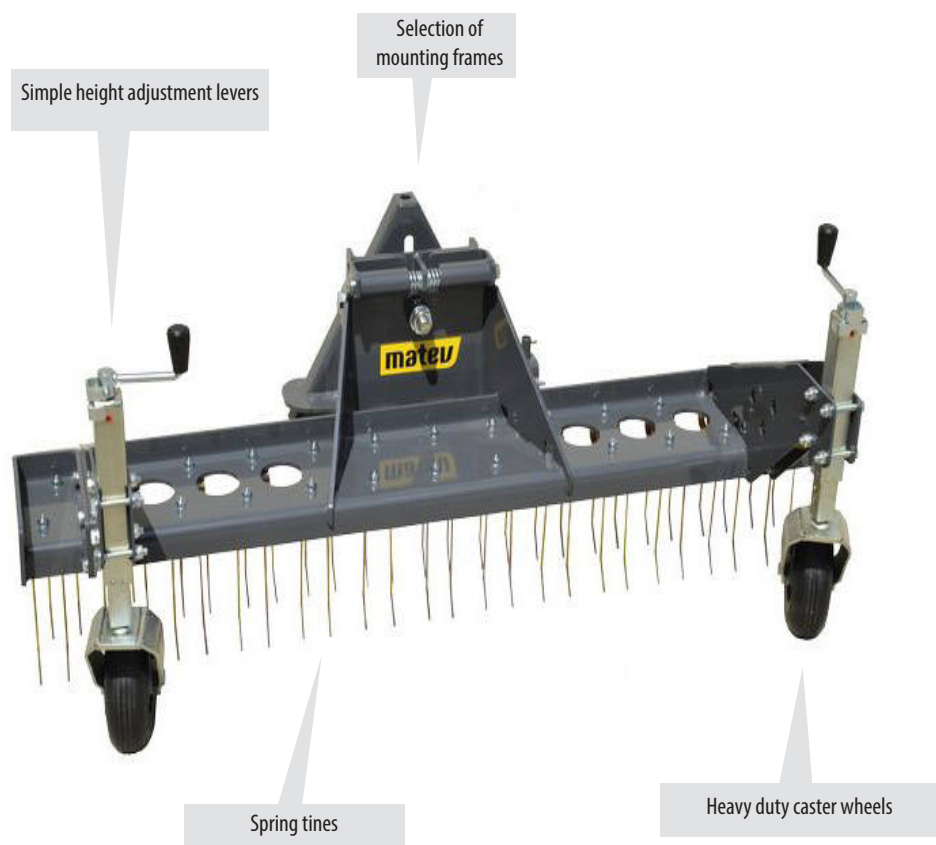
1318932	Drive kit 2000rpm anti-clockwise	1595
1318400	BAS universal joint shaft	320
1318846	Hydraulic lifting system for maintenance	650
1319000	Drip free hydraulic couplings	195

	Brackets & Linkages		Power Unit		Attachments		Accessories		Consumables
--	---------------------	---	------------	---	-------------	---	-------------	---	-------------



MATEV ROTARY MOWER WITH SPRING TINE SCARIFIER

SCA-M 130-Series Grass Harrow



Specification

- Dimensions (L/W/H) 677 x 1345 x 533 mm
- Working width 130cm
- Working width with extension 150cm
- Length of spring tines 190mm
- Number of spring tines 44 (+8 per extension kit)
- Weight 72kg (+8kg per extension kit)
- Attachment possibilities Cat.0 / Cat.1 with catch hooks
- Wheels 195 x 85mm

The lawn harrow SCA-M 130 allows you to treat green areas to an extra portion of care. The device's 44 spring tines loosen the soil and work turf thatch, moss and cuttings to the surface.

In connection with an inter-axle mower, you can groom and pick up the „combed out“ material in one operation. This way the soil has air to breathe again promoting a healthier lawn. The SCA-M 130 offers working widths from 130cm - 170cm to work in conjunction with your front mower.

The height can be finely set on the front support wheels, and connections are available for different linkages.

Model Number	Price (£)	Description
1318596	1995	130cm grass harrow

Part Number	Description	Price (£)
1318597	Bracket for Cat 0 linkage	250
1318679	Bracket for Cat 1 linkage (without triangle)	595

Accessories:

Part Number	Description	Price (£)
1318598	Width extension kit (extending to 150cm)	250

Brackets & Linkages
 Power Unit
 Attachments
 Accessories
 Consumables



MATEV SPRING TINE HARROW FITTED TO A JOHN DEERE

MRM-H 120-Series Vacuum Nozzle



Specification

- Dimensions (L/W/H) 886 x 1300 x 700 mm
- Working width standard 1200mm
- Working width with 1 side broom 1650mm
- Working width with 2 side brooms 2100mm
- Weight without options 105kg
- Brush rotation - against driving direction
- Roller brush drive required oil charge >11 l/min / 100 bar
- Mounting on the tractor Cat 0 / Cat 1
- Adjustable mounting height
- Reinforced casters
- Side broom diameter 500mm

The matev multifunctional suction nozzle MRM-H 120 is perfect for large-area material removal on different surfaces. Thanks to the powerful and robust rotor brush, even wet, stuck material is easily removed from the ground. The device can be used in conjunction with our many different volumes of collector mounted to the rear of the tractor.

The MRM-H 120 is stable and low-maintenance thanks to its steel construction with integrated chassis and well thought-out tubing. Optimal for all terrain by adapting to the ground with the help of tool-free, height-adjustable running wheels and 2D pendulum compensation. The height-adjustable air gap ensures optimal adaptation to the material to be picked up. With the optional side brushes available for both sides, the working width can be extended to over two meters.

Model Number	Price (£)	Description
1318968-8972	4550	120cm suction nozzle
1318980 (required)	150	200mm DIA hose (please specify length in metres from collector to the front of the tractor)

Part Number	Description	Price (£)
1317719	Bracket for Cat 0 A frame	250
1317893	Bracket for Cat 1 A frame	495
1317996	Bracket for Cat 1 linkage (without A frame)	695

Accessories:

Part Number	Description	Price (£)
1318988	Hydraulic kit with drip free couplings	195
1318976	Operating panel for the side brush (required for first side brush)	805
1318977	Side gully brush (left)	1495

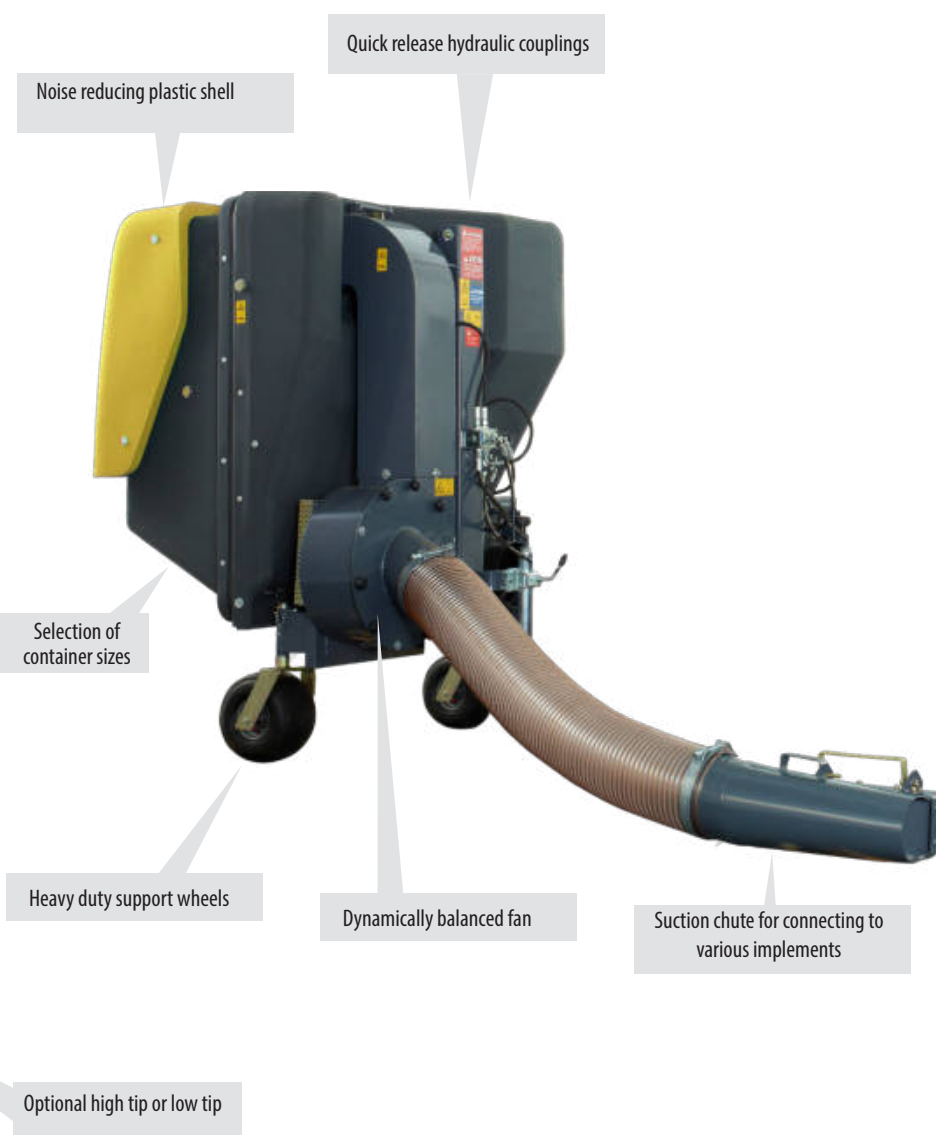
1318978	Side gully brush (right)	1495
1318979	Debris brush	550
1318986	Wander hose	305

Brackets & Linkages
 Power Unit
 Attachments
 Accessories
 Consumables



MATEV LEAF VACUUM AND COLLECTION SYSTEM

CLS-G/H 650/850-Series Collector



Specification

- Capacity 650 / 850 litre
- Dimensions (L/W/H) 843x1243x1470 / 998x1243x1470
- Weight w/o options 235-265kg / 240-270kg
- Lifting height, max 1850mm
- Overload height, max 520mm
- Turbine diameter 450mm
- Required hydraulic connections 2x / 1x

The collecting devices of the CLS series (650 and 850) are characterized by a light, yet robust, self-supporting container with PE plastic shells. Thanks to the optimized shape of the container, the clippings are strongly compressed, which means that the entire volume is used efficiently. Even under the toughest conditions, the powerful turbine enables the most varied of surfaces to be processed economically. Thanks to the optimized air flow and filter system, the development of dust is greatly reduced, even in dry conditions. The collection system is available with either high tip or low tip.

Model Number	Price (£)	Description
1318535-8537	6995	650 litre material collection system (low tip)
1318535-8538	7695	850 litre material collection system (low tip)
1318536-8537	9950	650 litre material collection system (high tip)
1318536-8538	10150	850 litre material collection system (high tip)
1318565	150	Hydraulic extension kit (please specify the type of tractor and hydraulic connections)

Part Number	Description	Price (£)
1317033	Attachment kit for rear 3PL Cat 1	165
1317002	Moveable parking and mounting supports including support wheel	295
1317003	DUO wheel kit 260x85 including support wheel	695
1317004	Wheel set 11x7-4 including support wheel	1050

Accessories:

Part Number	Description	Price (£)
1315752	CLS universal joint shaft with free wheel mechanism	525
1317027	Blower cover 200mm diameter for suction hose	195
1317012	Blower cover conically offset (for wider tractors)	395

1318949	Conversion kit from low dump to high dump	2450
1318006	Flow control	1150
1318914	Highway lighting kit	295
1317543	Attachment kit for rear 3PL short lower links	165



Brackets & Linkages



Power Unit



Attachments



Accessories



Consumables



MATEV HIGH-TIP COLLECTION SYSTEM FITTED TO MID MOUNTED MOWER

CLS-G/H 1050/1350/1650-Series Collector



Specification

- Capacity 1050 / 1350 / 1650 litre
- Dimensions (L/W/H) in mm 1275x1484x2025 / 1482x1484x2025 / 1710x1484x2025
- Weight w/o options in kg 422-497/ 429-504 / 437-512
- Loading height, max 2064mm
- Loading reach (at 1,8m), 465mm
- Turbine diameter 515mm
- Required hydraulic connections 2x

The collecting devices of the CLS series (1050, 1350, 1650) are characterized by a light, yet robust, self-supporting container with PE plastic shells. Thanks to the optimized shape of the container, the clippings are strongly compressed, which means that the entire volume is used efficiently. Even under the toughest conditions, the powerful turbine enables the most varied of surfaces to be processed economically. Thanks to the optimized air flow and filter system, the development of dust is greatly reduced, even in dry conditions. The collection system is available with either high tip or low tip.

Model Number	Price (£)	Description
1318561-8563	12350	1050 litre collection system (low dump) including wheels and universal joint shaft
1318561-8564	13150	1350 litre collection system (low dump) including wheels and universal joint shaft
1318561-8530	13950	1650 litre collection system (low dump) including wheels and universal joint shaft
1318562-8563	15195	1050 litre collection system (high dump) including wheels and universal joint shaft
1318562-8564	15995	1350 litre collection system (high dump) including wheels and universal joint shaft
1318562-8530	16850	1650 litre collection system (high dump) including wheels and universal joint shaft

Accessories:

Part Number	Description	Price (£)			
1317208	Blower cover 200mm diameter for suction hose	195	1318533	Conversion kit from high dump to low dump	350
1317252	Blower cover conically offset (for wider tractors)	395	1318534	Inspection window out of polycarbonate	115
1318532	Conversion kit from low dump to high dump	3195	1318006	Flow control	1150
			1318404	Highway lighting kit	295

 Brackets & Linkages	 Power Unit	 Attachments	 Accessories	 Consumables
--	--	---	---	---



MATEV HIGH-TIP COLLECTION SYSTEM BEING EMPTIED



KERSTEN (UK) LTD
PROGRESS HOUSE
39 BOULTON ROAD
READING
RG2 0NH

0118 986 9253
INFO@KERSTENUK.COM

KERSTENUK.COM

